



Appendix B13
ESB Asset Alterations



BUSCONNECTS DUBLIN CORE BUS CORRIDORS INFRASTRUCTURE WORKS

KIMMAGE TO CITY CENTRE CORE BUS CORRIDOR SCHEME

ESB ASSET ALTERATIONS. RECORDS AND PROPOSED WORKS.	
DRAWING SERIES NUMBER(S)	DRAWING SERIES DESCRIPTION
BCIDD-ROT-UTL_IX-0011_XX_00-DR-CU-0003	KIMMAGE TO CITY CENTRE CORE BUS CORRIDOR SCHEME. ESB ASSET ALTERATIONS. COVER SHEET
BCIDD-ROT-UTL_KP-0011_XX_00-DR-CU-0003	KIMMAGE TO CITY CENTRE CORE BUS CORRIDOR SCHEME. ESB ASSET ALTERATIONS. KEY PLAN
BCIDD-ROT-UTL_UE-0011_XX_00-DR-CU-0001 to 0014	KIMMAGE TO CITY CENTRE CORE BUS CORRIDOR SCHEME. ESB ASSET ALTERATIONS. DRAWINGS.

\\wddubp1u20191917117117-02_WIP08 MODELS01 CAD01 DWG03 STG 3 - STATUTORY PROCESS (M)01 PLANNING11 KIMMAGECOVER SHEETS/BCIDD-ROT-UTL_IX-0011_XX_00-DR-CU-0003.dwg

Disclaimer
 a. © National Transport Authority (NTA) 2022. This drawing is confidential and the copyright in it is owned by NTA. This drawing must not be either loaned, copied or otherwise reproduced in whole or in part or used for any purpose without the prior permission of NTA.
 b. This drawing is to be used for the design element identified in the titleblock. Other information shown is to be considered indicative only. The drawing is to be read in conjunction with all other relevant design drawings.
 c. O.S. data used for plans are printed under © Ordnance Survey Ireland Government of Ireland. All rights reserved. Licence Number 2022/OSI_NMA_180 National Transport Authority. All elevations are in metres and relate to OSI Geoid Model (OSGM15) Mean Head. All Co-ordinates are in Irish Transverse Mercator Grid (ITM) as defined by OSI active local GPS station.
 d. Information concerning the position of apparatus shown on this drawing is based on drawings supplied by the utility owners and/or the utility works contractor, whilst every care has been taken in the preparation of this drawing, positions should be taken as approximate and are intended for general guidance only and no representation is made by the NTA as to the accuracy, completeness, sufficiency or otherwise of this drawing and the position of the apparatus. The information contained herein does not purport to be comprehensive or final as the apparatus is subject to being altered and/or superceded. Recipients should not rely on this information. Any liabilities are hereby expressly disclaimed.
 e. The information contained herein has been provided by the NTA but does not purport to be comprehensive or final. Recipients should not rely on the information. Neither the NTA nor any of its directors, officers, employees, agents, stakeholders or advisers make any representation or warranty as to, or accept any liability or responsibility in relation to, the adequacy, accuracy, reasonableness or completeness of the information provided as part of this document or any matter on which the information is based (including but not limited to loss or damage arising as a result of reliance by recipients on the information or any part of it). Any liabilities are hereby expressly disclaimed.

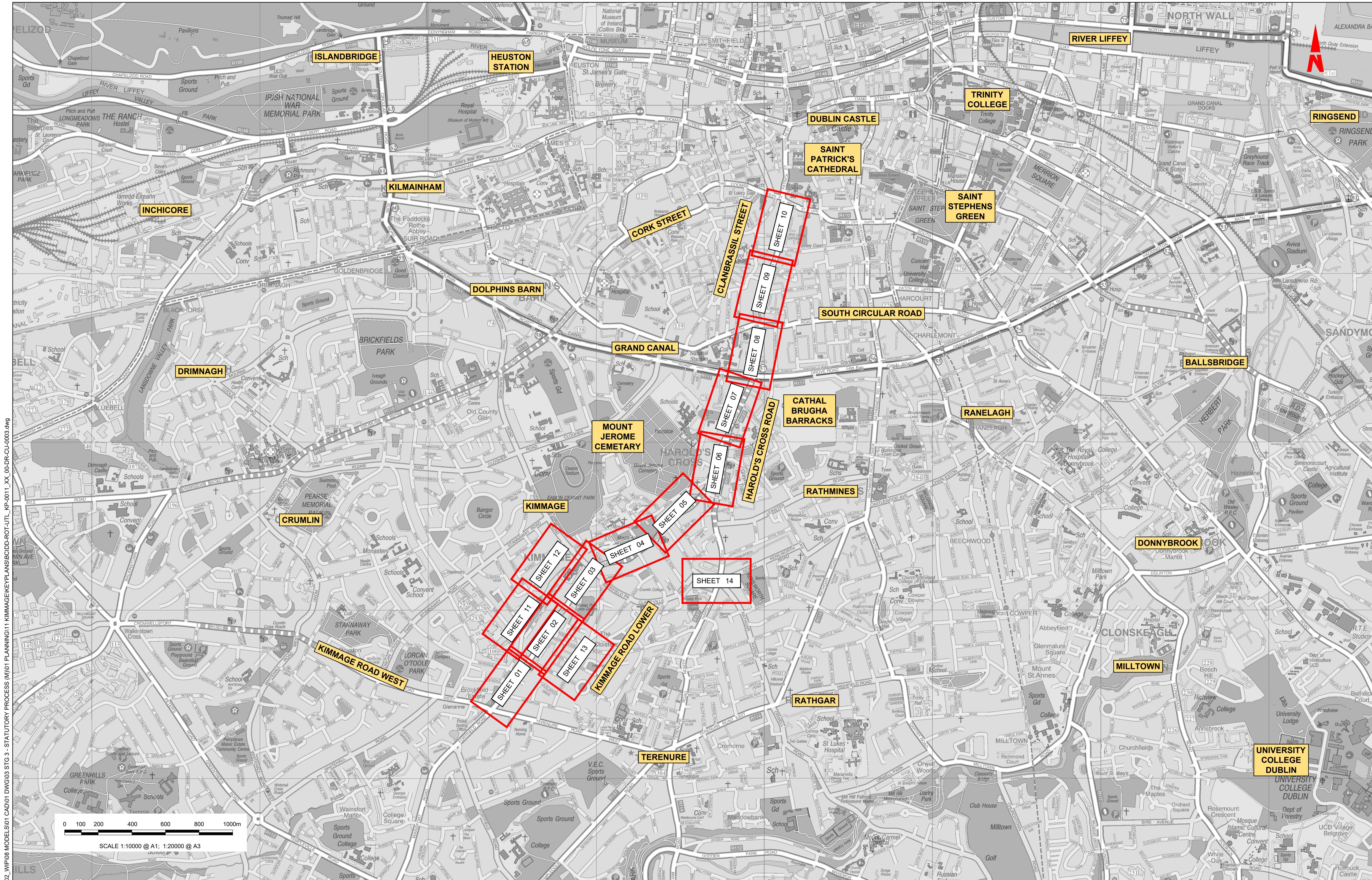


Rev	Date	Dwn	Chk'd	App'd	Description
M01	FEB 2023	CG	SMG	SMG	ISSUE FOR PHASE 4: PLANNING

Client NTA Údarás Náisiúnta Iompair National Transport Authority		Engineering Designer ROD TYP SA RUGHAN & O'DONOVAN		
Date FEB 2023	Scale NTS @ A1 NTS @ A3	Drawn CG	Checked SMG	Approved SMG
Programme Code BCIDD	Originator Code ROT	QMS Code		

Programme Title BUSCONNECTS DUBLIN CORE BUS CORRIDORS INFRASTRUCTURE WORKS			
Drawing Title KIMMAGE TO CITY CENTRE CORE BUS CORRIDOR SCHEME ESB ASSET ALTERATIONS COVER SHEET			
Drawing File Name BCIDD-ROT-UTL_IX-0011_XX_00-DR-CU-0003	Sheet Number 03 of 0	Status A	Rev M01

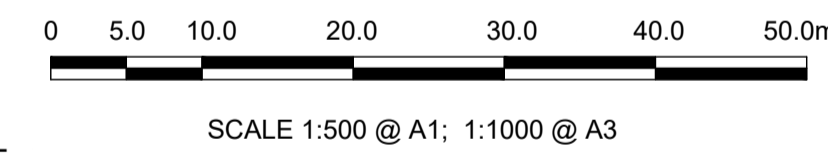
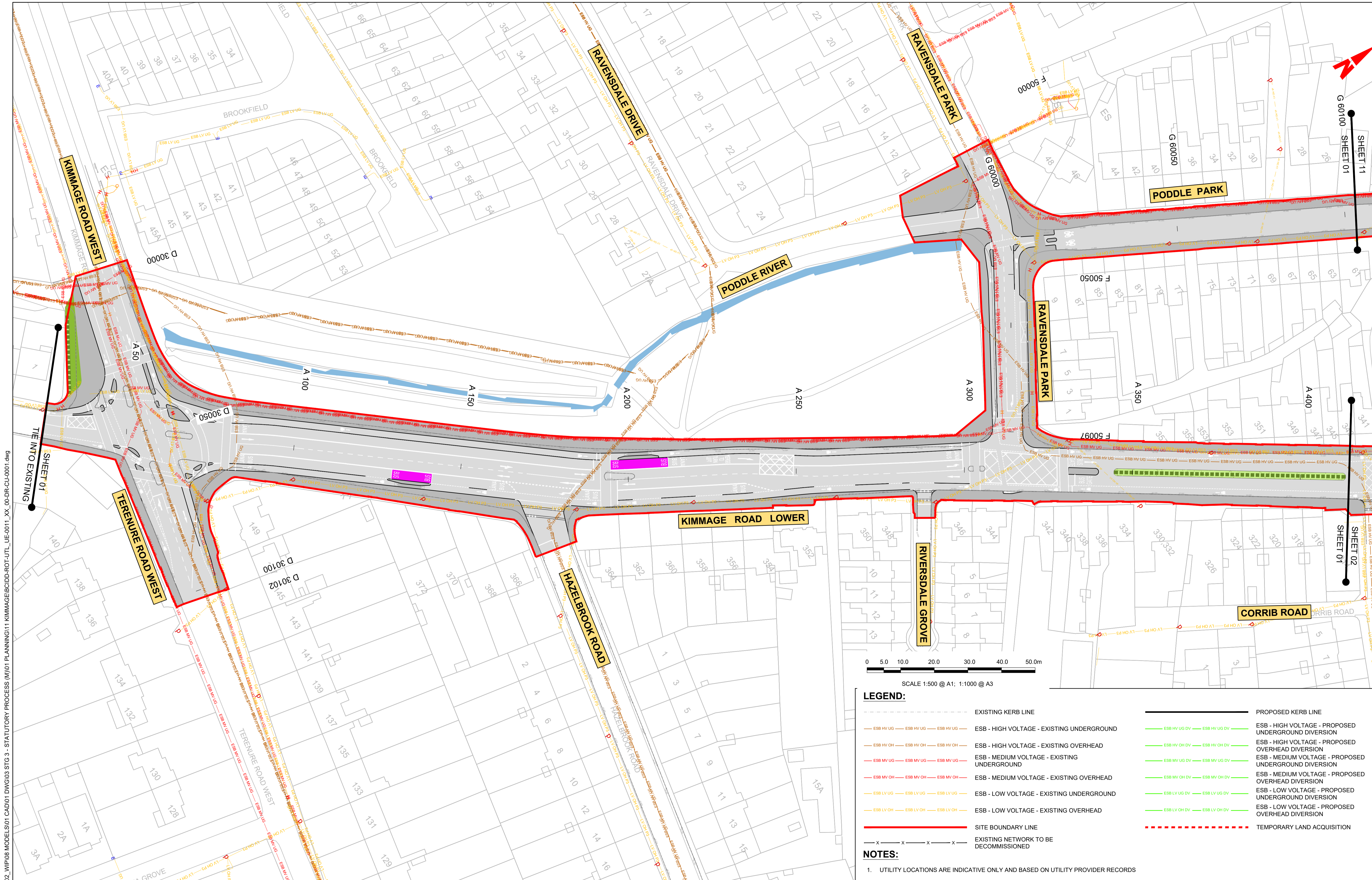
DO NOT SCALE USE FIGURED DIMENSIONS ONLY



W:\000000\191119117-02_WIP08 MODELS\01_CAD\01 PLANNING\11_KIMMAGE\KEYPLANS\BCIDD-ROT-UTL_KP-0011_XX_00-DR-CU-0003.dwg
 0 100 200 400 600 800 1000m
 SCALE 1:10000 @ A1; 1:20000 @ A3

<p>Disclaimer</p> <p>a. © National Transport Authority (NTA) 2022. This drawing is confidential and the copyright in it is owned by NTA. This drawing must not be either loaned, copied or otherwise reproduced in whole or in part or used for any purpose without the prior permission of NTA.</p> <p>b. This drawing is to be used for the design element identified in the titleblock. Other information shown is to be considered indicative only. The drawing is to be read in conjunction with all other relevant design drawings.</p> <p>c. O.S. data used for plans are printed under © Ordnance Survey Ireland Government of Ireland. All rights reserved. Licence Number 2022/OSI_NMA_180 National Transport Authority. All elevations are in metres and relate to OSI Geoid Model (OSGM15) Mean Head. All Co-ordinates are in Irish Transverse Mercator Grid (ITM) as defined by OSI active local GPS station.</p> <p>d. Information concerning the position of apparatus shown on this drawing is based on drawings supplied by the utility owners and/or the utility works contractor, whilst every care has been taken in the preparation of this drawing, positions should be as to, or accept any liability or responsibility in relation to, the adequacy, accuracy, reasonableness or completeness of the information provided as part of this document or any matter on which the information is based (including but not limited to loss or damage arising as a result of reliance by recipients on the information or any part of it). Any liabilities are hereby expressly disclaimed.</p>		<p>Rev M01 Date FEB 2023 Dm CG Chk'd SMG App'd SMC Description ISSUE FOR PHASE 4: PLANNING</p>		<p>Client NTA Udárás Náisiúnta Iompair National Transport Authority</p>		<p>Engineering Designer CIROD TYPSA</p>		<p>Programme Title BUSCONNECTS DUBLIN CORE BUS CORRIDORS INFRASTRUCTURE WORKS</p>	
<p>Date FEB 2023 Scale 1:10,000 @ A1 1:20,000 @ A3</p>		<p>Drawn CG Checked SMG Approved SMG</p>		<p>Programme Code BCIDD Originator Code ROT</p>		<p>QMS Code</p>		<p>Drawing File Name BCIDD-ROT-UTL_KP-0011_XX_00-DR-CU-0003</p>	
<p>Project Ireland 2040 Building Ireland's Future</p>		<p>Sheet Number 03 of 01</p>		<p>Status A</p>		<p>Rev M01</p>		<p>Drawing Title KIMMAGE TO CITY CENTRE CORE BUS CORRIDOR SCHEME ESB ASSET ALTERATIONS KEYPLAN</p>	

DO NOT SCALE USE FIGURED DIMENSIONS ONLY



LEGEND:

---	EXISTING KERB LINE	---	PROPOSED KERB LINE
---	ESB - HIGH VOLTAGE - EXISTING UNDERGROUND	---	ESB - HIGH VOLTAGE - PROPOSED UNDERGROUND DIVERSION
---	ESB - HIGH VOLTAGE - EXISTING OVERHEAD	---	ESB - HIGH VOLTAGE - PROPOSED OVERHEAD DIVERSION
---	ESB - MEDIUM VOLTAGE - EXISTING UNDERGROUND	---	ESB - MEDIUM VOLTAGE - PROPOSED UNDERGROUND DIVERSION
---	ESB - MEDIUM VOLTAGE - EXISTING OVERHEAD	---	ESB - MEDIUM VOLTAGE - PROPOSED OVERHEAD DIVERSION
---	ESB - LOW VOLTAGE - EXISTING UNDERGROUND	---	ESB - LOW VOLTAGE - PROPOSED UNDERGROUND DIVERSION
---	ESB - LOW VOLTAGE - EXISTING OVERHEAD	---	ESB - LOW VOLTAGE - PROPOSED OVERHEAD DIVERSION
---	SITE BOUNDARY LINE	---	TEMPORARY LAND ACQUISITION
---	EXISTING NETWORK TO BE DECOMMISSIONED		

NOTES:

- UTILITY LOCATIONS ARE INDICATIVE ONLY AND BASED ON UTILITY PROVIDER RECORDS

Disclaimer

a. © National Transport Authority (NTA) 2022. This drawing is confidential and the copyright in it is owned by NTA. This drawing must not be either loaned, copied or otherwise reproduced in whole or in part or used for any purpose without the prior permission of NTA.

b. This drawing is to be used for the design element identified in the titleblock. Other information shown is to be considered indicative only. The drawing is to be read in conjunction with all other relevant design drawings.

c. O.S. data used for plans are printed under © Ordnance Survey Ireland Government of Ireland. All rights reserved. Licence Number 2022/OSI_NMA_180 National Transport Authority. All elevations are in metres and relate to OSI Geoid Model (OSGM15) Mean Head. All Co-ordinates are in Irish Transverse Mercator Grid (ITM) as defined by OSI active local GPS station.

d. Information concerning the position of apparatus shown on this drawing is based on drawings supplied by the utility owners and/or the utility works contractor, whilst every care has been taken in the preparation of this drawing, positions should be taken as approximate and are intended for general guidance only and no representation is made by the NTA as to the accuracy, completeness, sufficiency or otherwise of this drawing and the position of the apparatus. The information contained herein does not purport to be comprehensive or final as the apparatus is subject to being altered and/or superceded. Recipients should not rely on this information. Any liabilities are hereby expressly disclaimed.

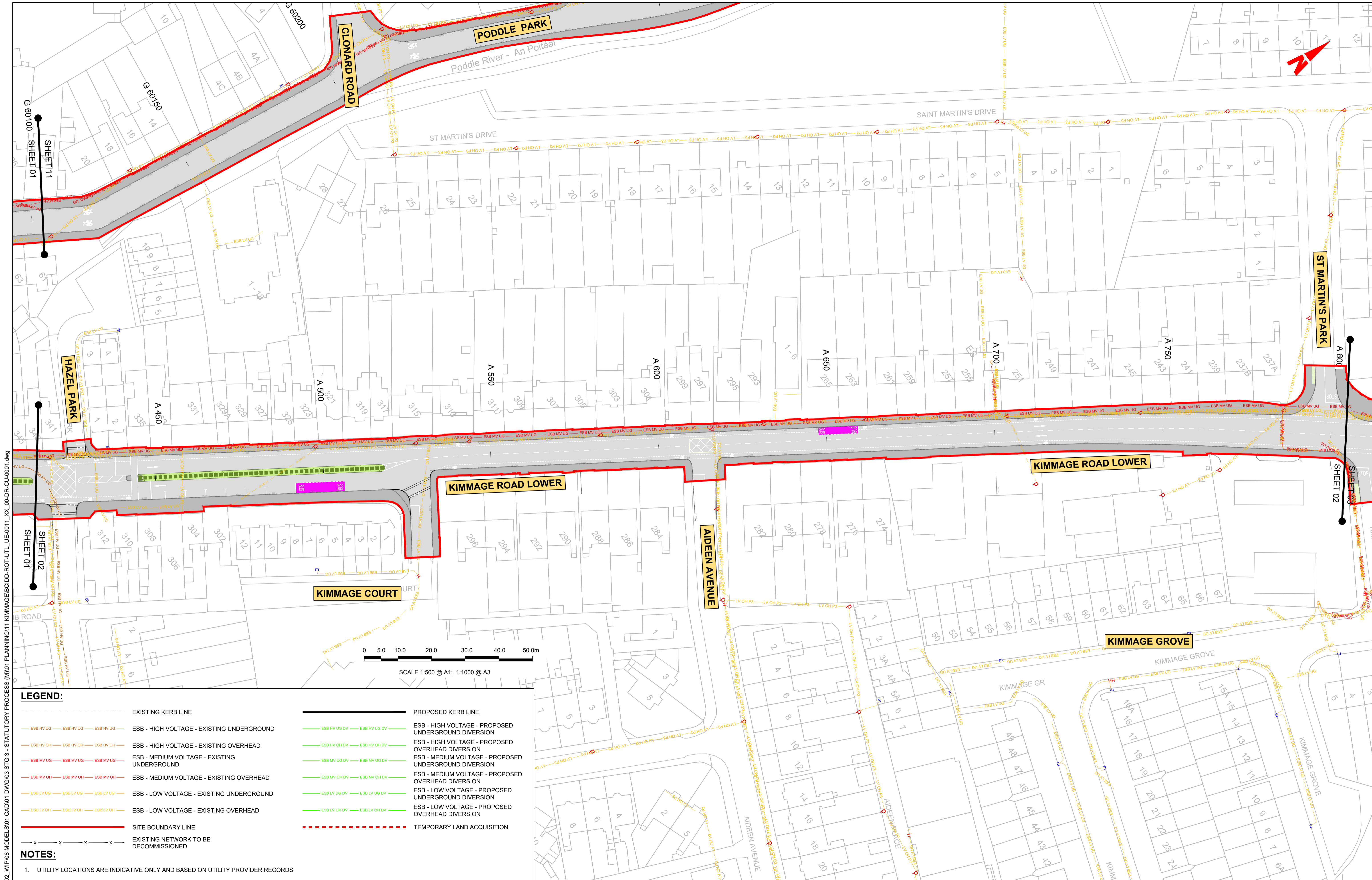
e. The information contained herein has been provided by the NTA but does not purport to be comprehensive or final. Recipients should not rely on the information. Neither the NTA nor any of its directors, officers, employees, agents, stakeholders or advisers make any representation or warranty as to, or accept any liability or responsibility in relation to, the adequacy, accuracy, reasonableness or completeness of the information provided as part of this document or any matter on which the information is based (including but not limited to loss or damage arising as a result of reliance by recipients on the information or any part of it). Any liabilities are hereby expressly disclaimed.

		Rev	Date	Drn	Chk'd	App'd	Description
		M01	FEB 2023	DS	EE	SMG	ISSUED FOR PHASE 4: PLANNING

Client NTA Udarás Náisiúnta Iompair National Transport Authority		Engineering Designer CIROD TYPSA		
Date FEB 2023	Scale 1:500 @ A1 1:1000 @ A3	Drawn DS	Checked EE	Approved SMG
Programme Code BCIDD	Originator Code ROT	QMS Code		

Programme Title BUSCONNECTS DUBLIN CORE BUS CORRIDORS INFRASTRUCTURE WORKS				
Drawing Title KIMMAGE TO CITY CENTRE CORE BUS CORRIDOR SCHEME ESB ASSET ALTERATIONS				
Drawing File Name BCIDD-ROT-UTL_UE-0011_XX_00-DR-CU-0001	Sheet Number 01 of 14	Status A	Rev M01	

DO NOT SCALE USE FIGURED DIMENSIONS ONLY



LEGEND:

---	EXISTING KERB LINE	---	PROPOSED KERB LINE
---	ESB - HIGH VOLTAGE - EXISTING UNDERGROUND	---	ESB - HIGH VOLTAGE - PROPOSED UNDERGROUND DIVERSION
---	ESB - HIGH VOLTAGE - EXISTING OVERHEAD	---	ESB - HIGH VOLTAGE - PROPOSED OVERHEAD DIVERSION
---	ESB - MEDIUM VOLTAGE - EXISTING UNDERGROUND	---	ESB - MEDIUM VOLTAGE - PROPOSED UNDERGROUND DIVERSION
---	ESB - MEDIUM VOLTAGE - EXISTING OVERHEAD	---	ESB - MEDIUM VOLTAGE - PROPOSED OVERHEAD DIVERSION
---	ESB - LOW VOLTAGE - EXISTING UNDERGROUND	---	ESB - LOW VOLTAGE - PROPOSED UNDERGROUND DIVERSION
---	ESB - LOW VOLTAGE - EXISTING OVERHEAD	---	ESB - LOW VOLTAGE - PROPOSED OVERHEAD DIVERSION
---	SITE BOUNDARY LINE	---	TEMPORARY LAND ACQUISITION
---	EXISTING NETWORK TO BE DECOMMISSIONED		

NOTES:

- UTILITY LOCATIONS ARE INDICATIVE ONLY AND BASED ON UTILITY PROVIDER RECORDS

Disclaimer:

a. © National Transport Authority (NTA) 2022. This drawing is confidential and the copyright in it is owned by NTA. This drawing must not be either loaned, copied or otherwise reproduced in whole or in part or used for any purpose without the prior permission of NTA.

b. This drawing is to be used for the design element identified in the titlebox. Other information shown is to be considered indicative only. The drawing is to be read in conjunction with all other relevant design drawings.

c. O.S. data used for plans are printed under © Ordnance Survey Ireland Government of Ireland. All rights reserved. Licence Number 2022/OSI_NMA_180 National Transport Authority. All elevations are in metres and relate to OSI Grid Model (OSGM15) Mean Head. All Co-ordinates are in Irish Transverse Mercator Grid (ITM) as defined by OSI active local GPS station.

d. Information concerning the position of apparatus shown on this drawing is based on drawings supplied by the utility owners and/or the utility works contractor, whilst every care has been taken in the preparation of this drawing, positions should be taken as approximate and are intended for general guidance only and no representation is made by the NTA as to the accuracy, completeness, sufficiency or otherwise of this drawing and the position of the apparatus. The information contained herein does not purport to be comprehensive or final as the apparatus is subject to being altered and/or superceded. Recipients should not rely on this information. Any liabilities are hereby expressly disclaimed.

e. The information contained herein has been provided by the NTA but does not purport to be comprehensive or final. Recipients should not rely on the information. Neither the NTA nor any of its directors, officers, employees, agents, stakeholders or advisers make any representation or warranty as to, or accept any liability or responsibility in relation to, the adequacy, accuracy, reasonableness or completeness of the information provided as part of this document or any matter on which the information is based (including but not limited to loss or damage arising as a result of reliance by recipients on the information or any part of it). Any liabilities are hereby expressly disclaimed.



Rev	Date	Drm	Chk'd	App'd	Description
M01	FEB 2023	DS	EE	SMG	ISSUED FOR PHASE 4: PLANNING

Client

Údarás Náisiúnta Iompair
National Transport Authority

Engineering Designer

Drawn DS
Checked EE
Approved SMG

Programme Title

**BUSCONNECTS DUBLIN
CORE BUS CORRIDORS INFRASTRUCTURE WORKS**

Drawing Title

KIMMAGE TO CITY CENTRE CORE BUS CORRIDOR SCHEME
ESB ASSET ALTERATIONS

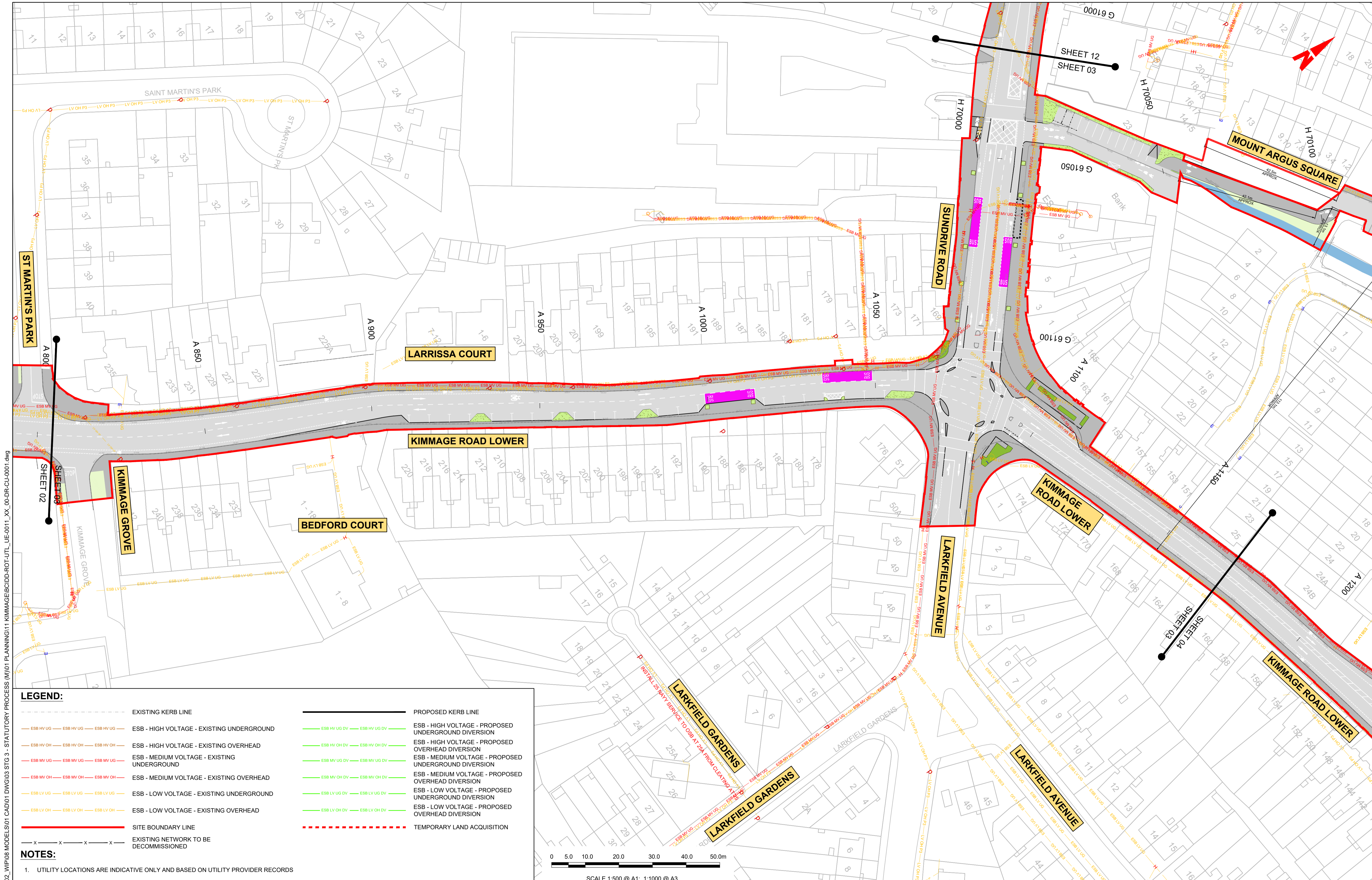
Drawing File Name: BCIDD-ROT-UTL_UE-0011_XX_00-DR-CU-0002

Sheet Number: 02 of 14

Status: A

Rev: M01

DO NOT SCALE USE FIGURED DIMENSIONS ONLY

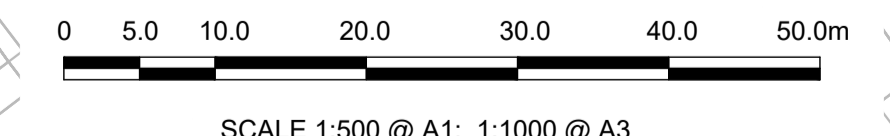


LEGEND:

	EXISTING KERB LINE		PROPOSED KERB LINE
	ESB - HIGH VOLTAGE - EXISTING UNDERGROUND		ESB - HIGH VOLTAGE - PROPOSED UNDERGROUND DIVERSION
	ESB - HIGH VOLTAGE - EXISTING OVERHEAD		ESB - HIGH VOLTAGE - PROPOSED OVERHEAD DIVERSION
	ESB - MEDIUM VOLTAGE - EXISTING UNDERGROUND		ESB - MEDIUM VOLTAGE - PROPOSED UNDERGROUND DIVERSION
	ESB - MEDIUM VOLTAGE - EXISTING OVERHEAD		ESB - MEDIUM VOLTAGE - PROPOSED OVERHEAD DIVERSION
	ESB - LOW VOLTAGE - EXISTING UNDERGROUND		ESB - LOW VOLTAGE - PROPOSED UNDERGROUND DIVERSION
	ESB - LOW VOLTAGE - EXISTING OVERHEAD		ESB - LOW VOLTAGE - PROPOSED OVERHEAD DIVERSION
	SITE BOUNDARY LINE		TEMPORARY LAND ACQUISITION
	EXISTING NETWORK TO BE DECOMMISSIONED		

NOTES:

1. UTILITY LOCATIONS ARE INDICATIVE ONLY AND BASED ON UTILITY PROVIDER RECORDS



Disclaimer:

a. © National Transport Authority (NTA) 2022. This drawing is confidential and the copyright in it is owned by NTA. This drawing must not be either loaned, copied or otherwise reproduced in whole or in part or used for any purpose without the prior permission of NTA.

b. This drawing is to be used for the design element identified in the title block. Other information shown is to be considered indicative only. The drawing is to be read in conjunction with all other relevant design drawings.

c. O.S. data used for plans are printed under © Ordnance Survey Ireland Government of Ireland. All rights reserved. Licence Number 2022/OSI_NMA_180 National Transport Authority. All elevations are in metres and relate to OSI Geoid Model (OSGM15) Mean Head. All Co-ordinates are in Irish Transverse Mercator Grid (ITM) as defined by OSI active local GPS station.

d. Information concerning the position of apparatus shown on this drawing is based on drawings supplied by the utility owners and/or the utility works contractor, whilst every care has been taken in the preparation of this drawing, positions should be taken as approximate and are intended for general guidance only and no representation is made by the NTA as to the accuracy, completeness, sufficiency or otherwise of this information. The information contained herein does not purport to be comprehensive or final as the apparatus is subject to being altered and/or superceded. Recipients should not rely on this information. Any liabilities are hereby expressly disclaimed.

e. The information contained herein has been provided by the NTA but does not purport to be comprehensive or final. Recipients should not rely on the information. Neither the NTA nor any of its directors, officers, employees, agents, stakeholders or advisers make any representation or warranty as to, or accept any liability or responsibility in relation to, the adequacy, accuracy, reasonableness or completeness of the information provided as part of this document or any matter on which the information is based (including but not limited to loss or damage arising as a result of reliance by recipients on the information or any part of it). Any liabilities are hereby expressly disclaimed.



Rev	Date	Drm	Chk'd	App'd	Description
M01	FEB 2023	DS	EE	SMG	ISSUED FOR PHASE 4: PLANNING

Client: **NTA**
Údaráis Náisiúnta Iompair
National Transport Authority

Engineering Designer: **PROD**
TYPSA

Date: FEB 2023
Scale: 1:500 @ A1
1:1000 @ A3

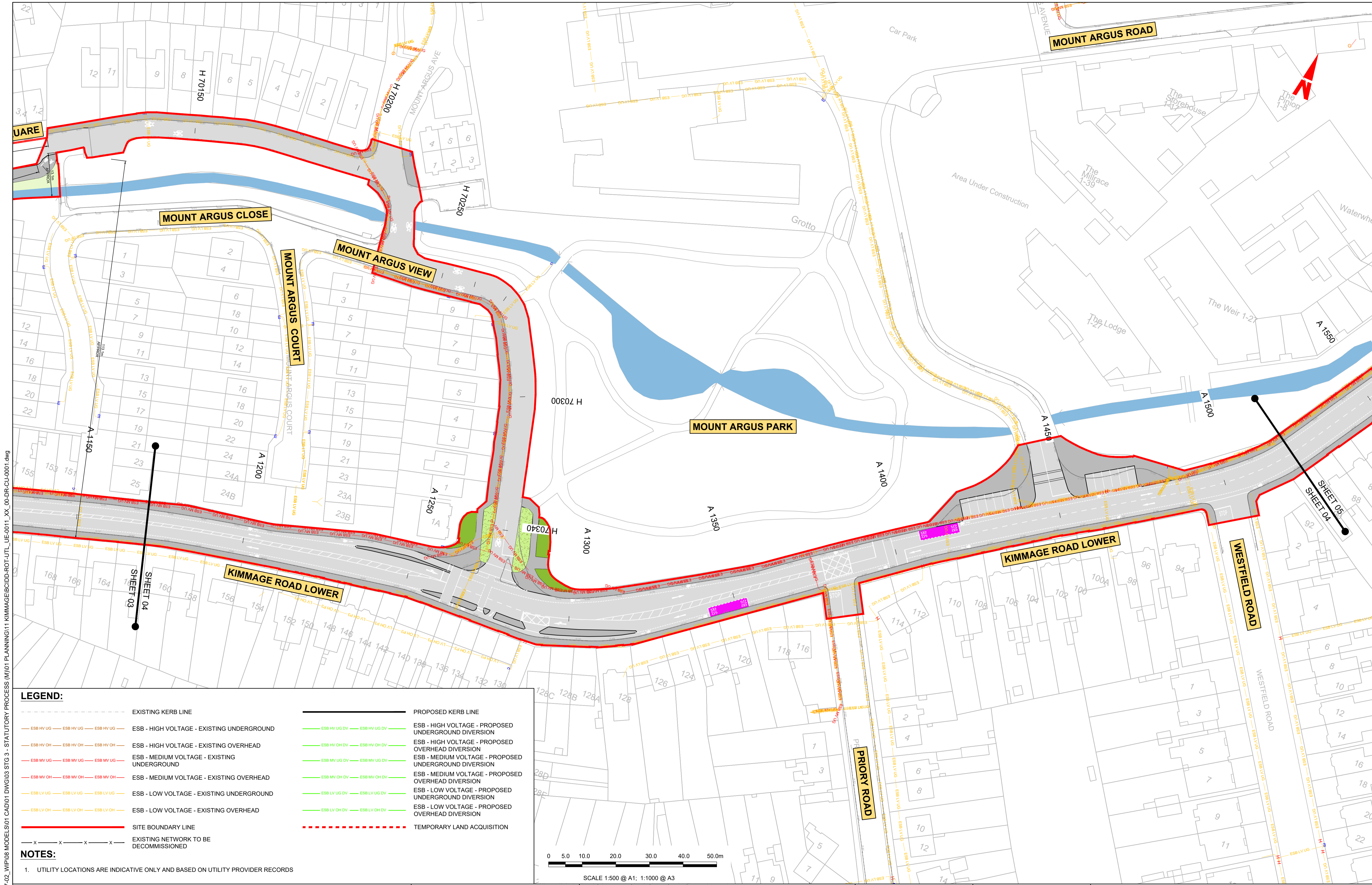
Programme Code: BCIDD
Originator Code: ROT

Drawn: DS
Checked: EE
Approved: SMG

Programme Title: BUSCONNECTS DUBLIN CORE BUS CORRIDORS INFRASTRUCTURE WORKS			
Drawing Title: KIMMAGE TO CITY CENTRE CORE BUS CORRIDOR SCHEME ESB ASSET ALTERATIONS			
Drawing File Name: BCIDD-ROT-UTL_UE-0011_XX_00-DR-CU-0003	Sheet Number: 03 of 14	Status: A	Rev: M01

DO NOT SCALE USE FIGURED DIMENSIONS ONLY

\\produbp1\U201917\1717-02_WIP\08 MODELS\01 CAD\01 DWG\03 STG 3 - STATUTORY PROCESS (M)\01 PLANNING\11 KIMMAGE\BIDD-ROT-UTL_UE-0011_XX_00-DR-CU-0001.dwg

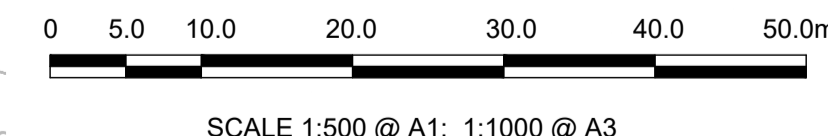


LEGEND:

---	EXISTING KERB LINE	---	PROPOSED KERB LINE
---	ESB - HIGH VOLTAGE - EXISTING UNDERGROUND	---	ESB - HIGH VOLTAGE - PROPOSED UNDERGROUND DIVERSION
---	ESB - HIGH VOLTAGE - EXISTING OVERHEAD	---	ESB - HIGH VOLTAGE - PROPOSED OVERHEAD DIVERSION
---	ESB - MEDIUM VOLTAGE - EXISTING UNDERGROUND	---	ESB - MEDIUM VOLTAGE - PROPOSED UNDERGROUND DIVERSION
---	ESB - MEDIUM VOLTAGE - EXISTING OVERHEAD	---	ESB - MEDIUM VOLTAGE - PROPOSED OVERHEAD DIVERSION
---	ESB - LOW VOLTAGE - EXISTING UNDERGROUND	---	ESB - LOW VOLTAGE - PROPOSED UNDERGROUND DIVERSION
---	ESB - LOW VOLTAGE - EXISTING OVERHEAD	---	ESB - LOW VOLTAGE - PROPOSED OVERHEAD DIVERSION
---	SITE BOUNDARY LINE	---	TEMPORARY LAND ACQUISITION
---	EXISTING NETWORK TO BE DECOMMISSIONED		

NOTES:

- UTILITY LOCATIONS ARE INDICATIVE ONLY AND BASED ON UTILITY PROVIDER RECORDS



\\nodubhp1\U201919\17119117-02_WIP\08 MODELS\01 CAD\01 DWG\03 STG 3 - STATUTORY PROCESS (M)\01 PLANNING\11 KIMMAGE\BCIDD-ROT-UTL_UE-0011_XX_00-DR-CU-0001.dwg

Disclaimer:

a. © National Transport Authority (NTA) 2022. This drawing is confidential and the copyright in it is owned by NTA. This drawing must not be either loaned, copied or otherwise reproduced in whole or in part or used for any purpose without the prior permission of NTA.

b. This drawing is to be used for the design element identified in the titlebox. Other information shown is to be considered indicative only. The drawing is to be read in conjunction with all other relevant design drawings.

c. O.S. data used for plans are printed under © Ordnance Survey Ireland Government of Ireland. All rights reserved. Licence Number 2022/OSI_NMA_180 National Transport Authority. All elevations are in metres and relate to OSI Geoid Model (OSGM15) Mean Head. All Co-ordinates are in Irish Transverse Mercator Grid (ITM) as defined by OSI active local GPS station.

d. Information concerning the position of apparatus shown on this drawing is based on drawings supplied by the utility owners and/or the utility works contractor, whilst every care has been taken in the preparation of this drawing, positions should be taken as approximate and are intended for general guidance only and no representation is made by the NTA as to the accuracy, completeness, sufficiency or otherwise of this drawing and the position of the apparatus. The information contained herein does not purport to be comprehensive or final as the apparatus is subject to being altered and/or superceded. Recipients should not rely on this information. Any liabilities are hereby expressly disclaimed.

e. The information contained herein has been provided by the NTA but does not purport to be comprehensive or final. Recipients should not rely on the information. Neither the NTA nor any of its directors, officers, employees, agents, stakeholders or advisers make any representation or warranty as to, or accept any liability or responsibility in relation to, the adequacy, accuracy, reasonableness or completeness of the information provided as part of this document or any matter on which the information is based (including but not limited to loss or damage arising as a result of reliance by recipients on the information or any part of it). Any liabilities are hereby expressly disclaimed.

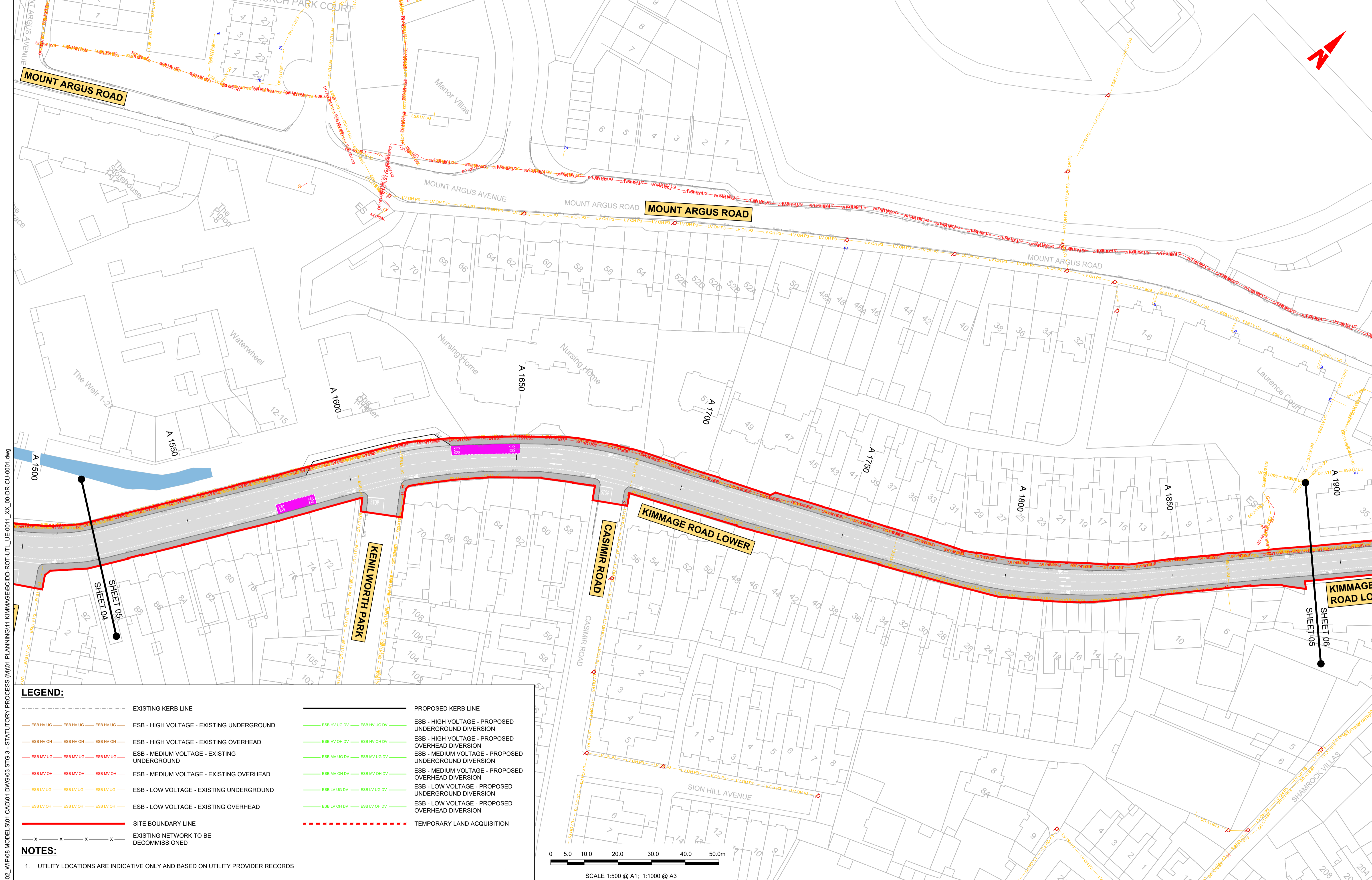


Rev	Date	Drm	Chk'd	App'd	Description
M01	FEB 2023	DS	EE	SMG	ISSUED FOR PHASE 4: PLANNING

Client NTA Udarás Náisiúnta Iompair National Transport Authority		Engineering Designer CIROD TYPSA		
Date FEB 2023	Scale 1:500 @ A1 1:1000 @ A3	Drawn DS	Checked EE	Approved SMG
Programme Code BCIDD	Originator Code ROT	QMS Code		

Programme Title BUSCONNECTS DUBLIN CORE BUS CORRIDORS INFRASTRUCTURE WORKS				
Drawing Title KIMMAGE TO CITY CENTRE CORE BUS CORRIDOR SCHEME ESB ASSET ALTERATIONS				
Drawing File Name BCIDD-ROT-UTL_UE-0011_XX_00-DR-CU-0004	Sheet Number 04 of 14	Status A	Rev M01	

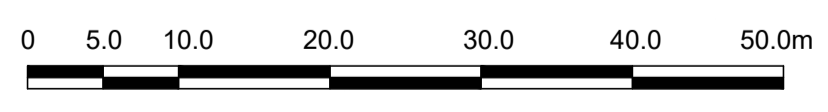
DO NOT SCALE USE FIGURED DIMENSIONS ONLY



LEGEND:

---	EXISTING KERB LINE	---	PROPOSED KERB LINE
---	ESB - HIGH VOLTAGE - EXISTING UNDERGROUND	---	ESB - HIGH VOLTAGE - PROPOSED UNDERGROUND DIVERSION
---	ESB - HIGH VOLTAGE - EXISTING OVERHEAD	---	ESB - HIGH VOLTAGE - PROPOSED OVERHEAD DIVERSION
---	ESB - MEDIUM VOLTAGE - EXISTING UNDERGROUND	---	ESB - MEDIUM VOLTAGE - PROPOSED UNDERGROUND DIVERSION
---	ESB - MEDIUM VOLTAGE - EXISTING OVERHEAD	---	ESB - MEDIUM VOLTAGE - PROPOSED OVERHEAD DIVERSION
---	ESB - LOW VOLTAGE - EXISTING UNDERGROUND	---	ESB - LOW VOLTAGE - PROPOSED UNDERGROUND DIVERSION
---	ESB - LOW VOLTAGE - EXISTING OVERHEAD	---	ESB - LOW VOLTAGE - PROPOSED OVERHEAD DIVERSION
---	SITE BOUNDARY LINE	---	TEMPORARY LAND ACQUISITION
---	EXISTING NETWORK TO BE DECOMMISSIONED		

- NOTES:**
- UTILITY LOCATIONS ARE INDICATIVE ONLY AND BASED ON UTILITY PROVIDER RECORDS



SCALE 1:500 @ A1; 1:1000 @ A3

Disclaimer

a. © National Transport Authority (NTA) 2022. This drawing is confidential and the copyright in it is owned by NTA. This drawing must not be either loaned, copied or otherwise reproduced in whole or in part or used for any purpose without the prior permission of NTA.

b. This drawing is to be used for the design element identified in the titlebox. Other information shown is to be considered indicative only. The drawing is to be read in conjunction with all other relevant design drawings.

c. O.S. data used for plans are printed under © Ordnance Survey Ireland Government of Ireland. All rights reserved. Licence Number 2022/OS/IMA_150 National Transport Authority. All elevations are in metres and relate to OSi Geoid Model (OSGM15) Mean Head. All Co-ordinates are in Irish Transverse Mercator Grid (ITM) as defined by OSI active local GPS station.

d. Information concerning the position of apparatus shown on this drawing is based on drawings supplied by the utility owners and/or the utility works contractor, whilst every care has been taken in the preparation of this drawing, positions should be taken as approximate and are intended for general guidance only and no representation is made by the NTA as to the accuracy, completeness, sufficiency or otherwise of this drawing and the position of the apparatus. The information contained herein does not purport to be comprehensive or final as the apparatus is subject to being altered and/or superseded. Recipients should not rely on this information. Any liabilities are hereby expressly disclaimed.

e. The information contained herein has been provided by the NTA but does not purport to be comprehensive or final. Recipients should not rely on the information. Neither the NTA nor any of its directors, officers, employees, agents, stakeholders or advisers make any representation or warranty as to, or accept any liability or responsibility in relation to, the adequacy, accuracy, reasonableness or completeness of the information provided as part of this document or any matter on which the information is based (including but not limited to loss or damage arising as a result of reliance by recipients on the information on any part of it). Any liabilities are hereby expressly disclaimed.



Rev	Date	Drn	Chk'd	App'd	Description
M01	FEB 2023	DS	EE	SMG	ISSUED FOR PHASE 4; PLANNING

Client

Udarás Náisiúnta Iompair
National Transport Authority

Date: FEB 2023
Scale: 1:500 @ A1
1:1000 @ A3

Programme Code: BCIDD
Originator Code: ROT

Engineering Designer

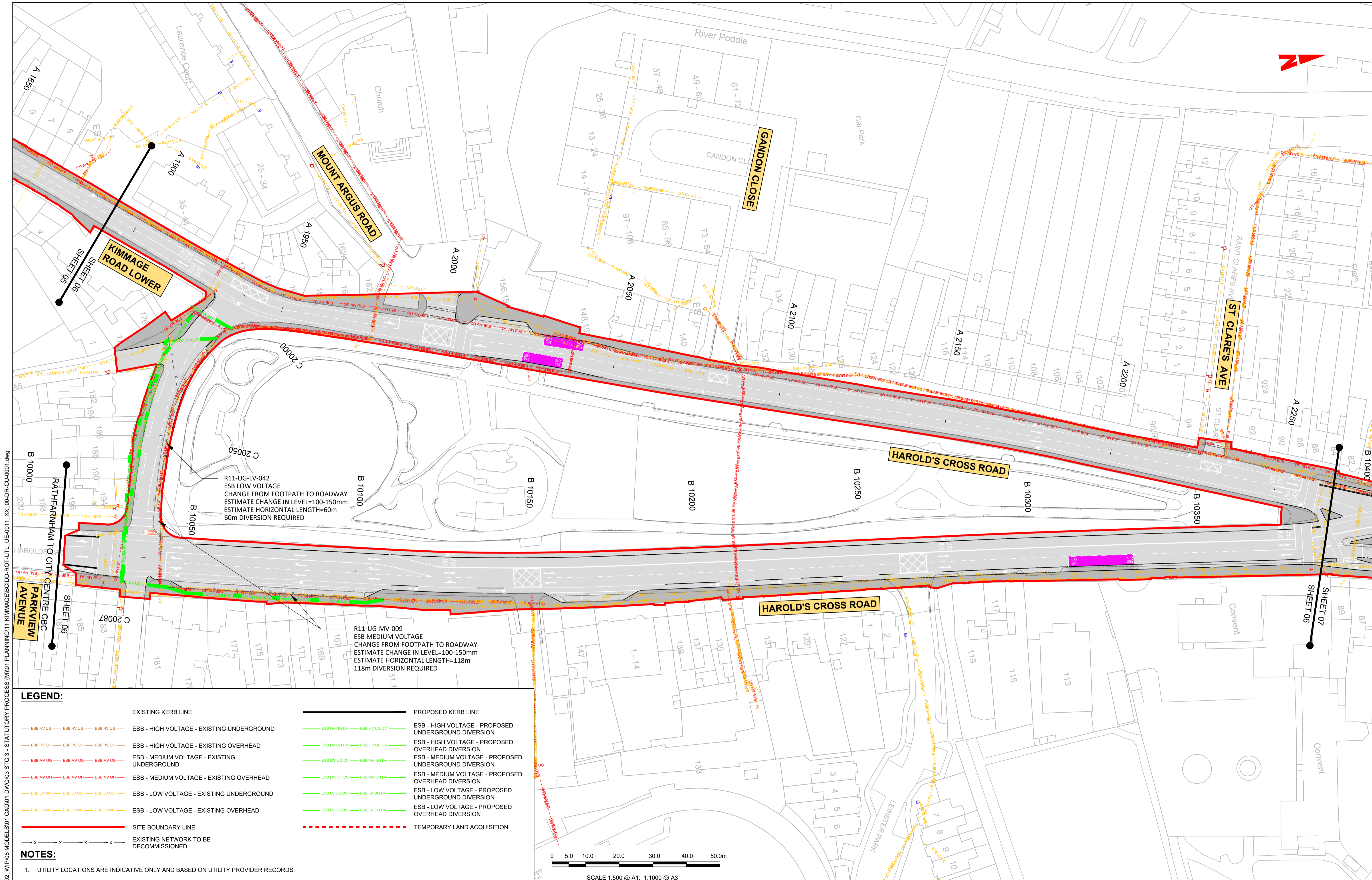
Checked: EE
Approved: SMG

Drawn: DS
OMS Code

Programme Title BUSCONNECTS DUBLIN CORE BUS CORRIDORS INFRASTRUCTURE WORKS			
Drawing Title KIMMAGE TO CITY CENTRE CORE BUS CORRIDOR SCHEME ESB ASSET ALTERATIONS			
Drawing File Name BCIDD-ROT-UTL_UE-0011_XX_00-DR-CU-0005	Sheet Number 05 of 14	Status A	Rev M01

DO NOT SCALE USE FIGURED DIMENSIONS ONLY

\\wddp1p1\1201919117191171_02_WIP08_MODELS\01_CAD\01_PLANNING\11_KIMMAGE\BCIDD-ROT-UTL_UE-0011_XX_00-DR-CU-0001.dwg

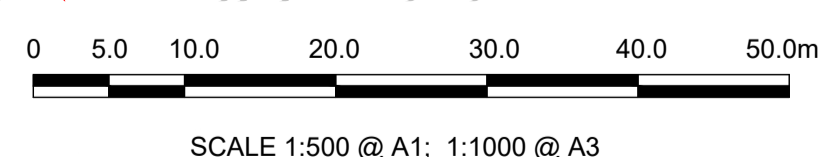


LEGEND:

---	EXISTING KERB LINE	---	PROPOSED KERB LINE
---	ESB - HIGH VOLTAGE - EXISTING UNDERGROUND	---	ESB - HIGH VOLTAGE - PROPOSED UNDERGROUND DIVERSION
---	ESB - HIGH VOLTAGE - EXISTING OVERHEAD	---	ESB - HIGH VOLTAGE - PROPOSED OVERHEAD DIVERSION
---	ESB - MEDIUM VOLTAGE - EXISTING UNDERGROUND	---	ESB - MEDIUM VOLTAGE - PROPOSED UNDERGROUND DIVERSION
---	ESB - MEDIUM VOLTAGE - EXISTING OVERHEAD	---	ESB - MEDIUM VOLTAGE - PROPOSED OVERHEAD DIVERSION
---	ESB - LOW VOLTAGE - EXISTING UNDERGROUND	---	ESB - LOW VOLTAGE - PROPOSED UNDERGROUND DIVERSION
---	ESB - LOW VOLTAGE - EXISTING OVERHEAD	---	ESB - LOW VOLTAGE - PROPOSED OVERHEAD DIVERSION
---	SITE BOUNDARY LINE	---	TEMPORARY LAND ACQUISITION
---	EXISTING NETWORK TO BE DECOMMISSIONED		

NOTES:

- UTILITY LOCATIONS ARE INDICATIVE ONLY AND BASED ON UTILITY PROVIDER RECORDS



Disclaimer:

a. © National Transport Authority (NTA) 2022. This drawing is confidential and the copyright in it is owned by NTA. This drawing must not be either loaned, copied or otherwise reproduced in whole or in part or used for any purpose without the prior permission of NTA.

b. This drawing is to be used for the design element identified in the titlebox. Other information shown is to be considered indicative only. The drawing is to be read in conjunction with all other relevant design drawings.

c. O.S. data used for plans are printed under © Ordnance Survey Ireland Government of Ireland. All rights reserved. Licence Number 2022/OSI_NMA_180 National Transport Authority. All elevations are in metres and relate to OSI Geoid Model (OSGM15) Mean Head. All Co-ordinates are in Irish Transverse Mercator Grid (ITM) as defined by OSI active local GPS station.

d. Information concerning the position of apparatus shown on this drawing is based on drawings supplied by the utility owners and/or the utility works contractor, whilst every care has been taken in the preparation of this drawing, positions should be taken as approximate and are intended for general guidance only and no representation is made by the NTA as to the accuracy, completeness, sufficiency or otherwise of this drawing and the position of the apparatus. The information contained herein does not purport to be comprehensive or final as the apparatus is subject to being altered and/or superceded. Recipients should not rely on this information. Any liabilities are hereby expressly disclaimed.

e. The information contained herein has been provided by the NTA but does not purport to be comprehensive or final. Recipients should not rely on the information. Neither the NTA nor any of its directors, officers, employees, agents, stakeholders or advisers make any representation or warranty as to, or accept any liability or responsibility in relation to, the adequacy, accuracy, reasonableness or completeness of the information provided as part of this document or any matter on which the information is based (including but not limited to loss or damage arising as a result of reliance by recipients on the information or any part of it). Any liabilities are hereby expressly disclaimed.



Rev	Date	Drm	Chk'd	App'd	Description
M01	FEB 2023	DS	EE	SMG	ISSUED FOR PHASE 4: PLANNING

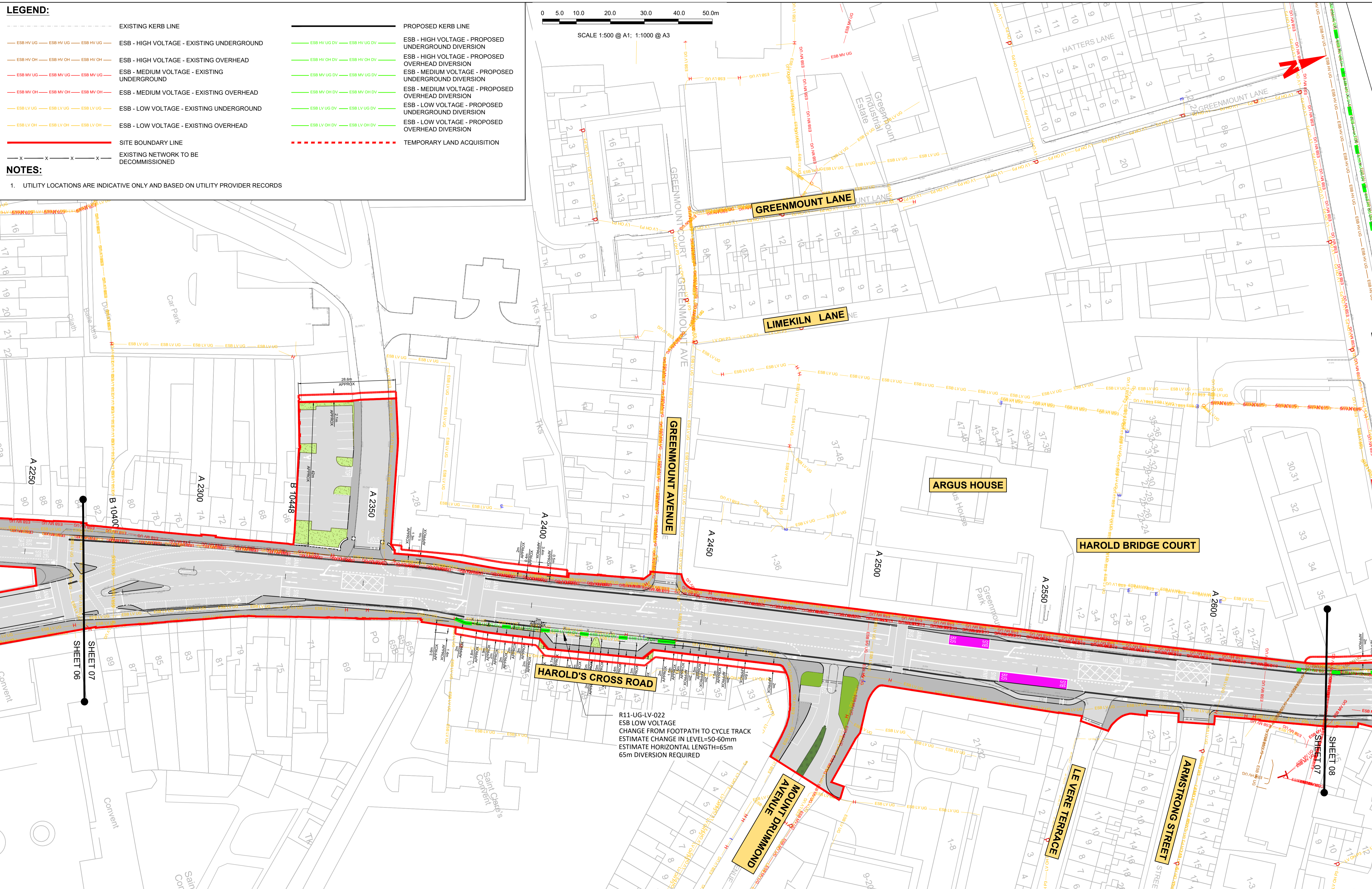
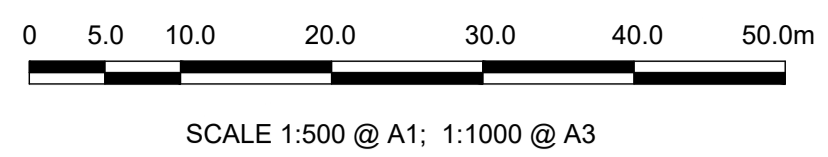
Client NTA Údarás Náisiúnta Iompair National Transport Authority		Engineering Designer FIROD TYPSA		
Date FEB 2023	Scale 1:500 @ A1 1:1000 @ A3	Drawn DS	Checked EE	Approved SMG
Programme Code BCIDD	Originator Code ROT	QMS Code		

Programme Title BUSCONNECTS DUBLIN CORE BUS CORRIDORS INFRASTRUCTURE WORKS				
Drawing Title KIMMAGE TO CITY CENTRE CORE BUS CORRIDOR SCHEME ESB ASSET ALTERATIONS				
Drawing File Name BCIDD-ROT-UTL_UE-0011_XX_00-DR-CU-0006	Sheet Number 06 of 14	Status A	Rev M01	

DO NOT SCALE USE FIGURED DIMENSIONS ONLY

LEGEND:	
	EXISTING KERB LINE
	PROPOSED KERB LINE
	ESB - HIGH VOLTAGE - EXISTING UNDERGROUND
	ESB - HIGH VOLTAGE - PROPOSED UNDERGROUND DIVERSION
	ESB - HIGH VOLTAGE - EXISTING OVERHEAD
	ESB - HIGH VOLTAGE - PROPOSED OVERHEAD DIVERSION
	ESB - MEDIUM VOLTAGE - EXISTING UNDERGROUND
	ESB - MEDIUM VOLTAGE - PROPOSED UNDERGROUND DIVERSION
	ESB - MEDIUM VOLTAGE - EXISTING OVERHEAD
	ESB - MEDIUM VOLTAGE - PROPOSED OVERHEAD DIVERSION
	ESB - LOW VOLTAGE - EXISTING UNDERGROUND
	ESB - LOW VOLTAGE - PROPOSED UNDERGROUND DIVERSION
	ESB - LOW VOLTAGE - EXISTING OVERHEAD
	ESB - LOW VOLTAGE - PROPOSED OVERHEAD DIVERSION
	SITE BOUNDARY LINE
	TEMPORARY LAND ACQUISITION
	EXISTING NETWORK TO BE DECOMMISSIONED

NOTES:
 1. UTILITY LOCATIONS ARE INDICATIVE ONLY AND BASED ON UTILITY PROVIDER RECORDS



R11-UG-LV-022
 ESB LOW VOLTAGE
 CHANGE FROM FOOTPATH TO CYCLE TRACK
 ESTIMATE CHANGE IN LEVEL=50-60mm
 ESTIMATE HORIZONTAL LENGTH=65m
 65m DIVERSION REQUIRED

Disclaimer
 a. © National Transport Authority (NTA) 2022. This drawing is confidential and the copyright in it is owned by NTA. This drawing must not be either loaned, copied or otherwise reproduced in whole or in part or used for any purpose without the prior permission of NTA.
 b. This drawing is to be used for the design element identified in the titlebox. Other information shown is to be considered indicative only. The drawing is to be read in conjunction with all other relevant design drawings.
 c. O.S. data used for plans are printed under © Ordnance Survey Ireland Government of Ireland. All rights reserved. Licence Number 2022/OSI_NMA_180 National Transport Authority. All elevations are in metres and relate to OSI Geoid Model (OSGM15) Mean Head. All Co-ordinates are in Irish Transverse Mercator Grid (ITM) as defined by OSI active local GPS station.
 d. Information concerning the position of apparatus shown on this drawing is based on drawings supplied by the utility owners and/or the utility works contractor, whilst every care has been taken in the preparation of this drawing, positions should be taken as approximate and are intended for general guidance only and no representation is made by the NTA as to the accuracy, completeness, sufficiency or otherwise of this information. The information contained herein does not purport to be comprehensive or final as the apparatus is subject to being altered and/or superceded. Recipients should not rely on this information. Any liabilities are hereby expressly disclaimed.
 e. The information contained herein has been provided by the NTA but does not purport to be comprehensive or final. Recipients should not rely on the information. Neither the NTA nor any of its directors, officers, employees, agents, stakeholders or advisers make any representation or warranty as to, or accept any liability or responsibility in relation to, the adequacy, accuracy, reasonableness or completeness of the information provided as part of this document or any matter on which the information is based (including but not limited to loss or damage arising as a result of reliance by recipients on the information or any part of it). Any liabilities are hereby expressly disclaimed.

Project Ireland 2040
 Building Ireland's Future

Rev	Date	Drn	Chkd	App'd	Description
M01	FEB 2023	DS	EE	SMG	ISSUED FOR PHASE 4: PLANNING

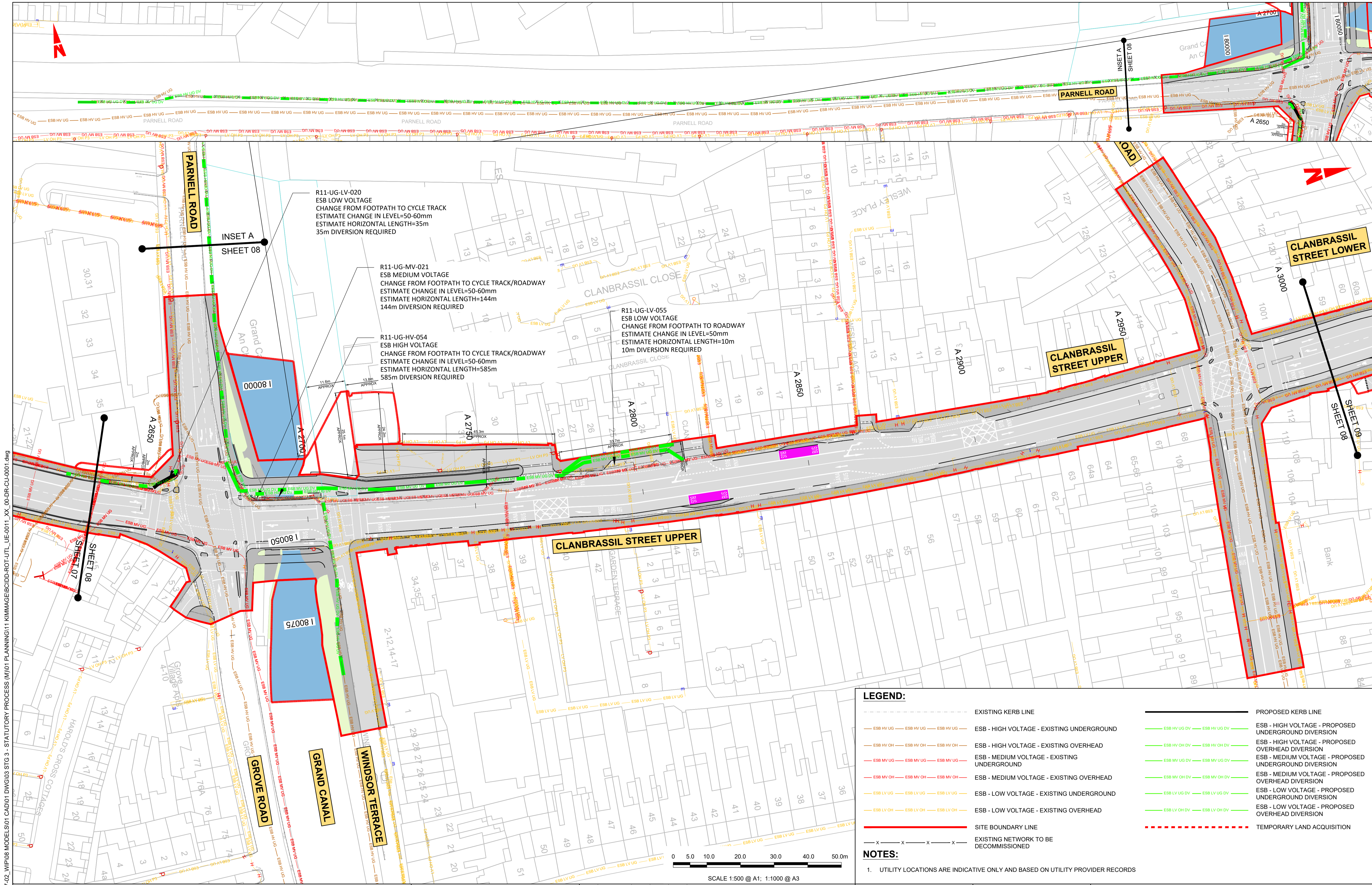
Client		Engineering Designer		Programme Title	
 Údarás Náisiúnta Iompair National Transport Authority		 FROD TYPSA		BUSCONNECTS DUBLIN CORE BUS CORRIDORS INFRASTRUCTURE WORKS	
Date	Scale	Drawn	Checked	Approved	Drawing Title
FEB 2023	1:500 @ A1 1:1000 @ A3	DS	EE	SMG	KIMMAGE TO CITY CENTRE CORE BUS CORRIDOR SCHEME ESB ASSET ALTERATIONS
Programme Code	Originator Code	QMS Code		Drawing File Name	Sheet Number
BCIDD	ROT			BCIDD-ROT-UTL_UE-0011_XX_00-DR-CU-0007	07 of 14
				Status	Rev
				A	M01

Client		Engineering Designer		Programme Title	
 Údarás Náisiúnta Iompair National Transport Authority		 FROD TYPSA		BUSCONNECTS DUBLIN CORE BUS CORRIDORS INFRASTRUCTURE WORKS	
Date	Scale	Drawn	Checked	Approved	Drawing Title
FEB 2023	1:500 @ A1 1:1000 @ A3	DS	EE	SMG	KIMMAGE TO CITY CENTRE CORE BUS CORRIDOR SCHEME ESB ASSET ALTERATIONS
Programme Code	Originator Code	QMS Code		Drawing File Name	Sheet Number
BCIDD	ROT			BCIDD-ROT-UTL_UE-0011_XX_00-DR-CU-0007	07 of 14
				Status	Rev
				A	M01

Client		Engineering Designer		Programme Title	
 Údarás Náisiúnta Iompair National Transport Authority		 FROD TYPSA		BUSCONNECTS DUBLIN CORE BUS CORRIDORS INFRASTRUCTURE WORKS	
Date	Scale	Drawn	Checked	Approved	Drawing Title
FEB 2023	1:500 @ A1 1:1000 @ A3	DS	EE	SMG	KIMMAGE TO CITY CENTRE CORE BUS CORRIDOR SCHEME ESB ASSET ALTERATIONS
Programme Code	Originator Code	QMS Code		Drawing File Name	Sheet Number
BCIDD	ROT			BCIDD-ROT-UTL_UE-0011_XX_00-DR-CU-0007	07 of 14
				Status	Rev
				A	M01

DO NOT SCALE USE FIGURED DIMENSIONS ONLY

W:\000000\1917117-02_WIP\08 MODELS\01 CAD\01 DWG\03 STG 3 - STATUTORY PROCESS (M)\01 PLANNING\11 KIMMAGE\BCIDD-ROT-UTL_UE-0011_XX_00-DR-CU-0001.dwg



R11-UG-LV-020
ESB LOW VOLTAGE
CHANGE FROM FOOTPATH TO CYCLE TRACK
ESTIMATE CHANGE IN LEVEL=50-60mm
ESTIMATE HORIZONTAL LENGTH=35m
35m DIVERSION REQUIRED

R11-UG-MV-021
ESB MEDIUM VOLTAGE
CHANGE FROM FOOTPATH TO CYCLE TRACK/ROADWAY
ESTIMATE CHANGE IN LEVEL=50-60mm
ESTIMATE HORIZONTAL LENGTH=144m
144m DIVERSION REQUIRED

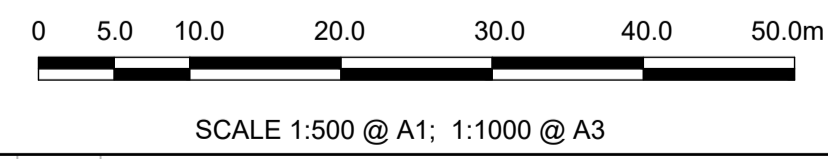
R11-UG-LV-055
ESB LOW VOLTAGE
CHANGE FROM FOOTPATH TO ROADWAY
ESTIMATE CHANGE IN LEVEL=50mm
ESTIMATE HORIZONTAL LENGTH=10m
10m DIVERSION REQUIRED

R11-UG-HV-054
ESB HIGH VOLTAGE
CHANGE FROM FOOTPATH TO CYCLE TRACK/ROADWAY
ESTIMATE CHANGE IN LEVEL=50-60mm
ESTIMATE HORIZONTAL LENGTH=585m
585m DIVERSION REQUIRED

LEGEND:

	EXISTING KERB LINE		PROPOSED KERB LINE
	ESB - HIGH VOLTAGE - EXISTING UNDERGROUND		ESB - HIGH VOLTAGE - PROPOSED UNDERGROUND DIVERSION
	ESB - HIGH VOLTAGE - EXISTING OVERHEAD		ESB - HIGH VOLTAGE - PROPOSED OVERHEAD DIVERSION
	ESB - MEDIUM VOLTAGE - EXISTING UNDERGROUND		ESB - MEDIUM VOLTAGE - PROPOSED UNDERGROUND DIVERSION
	ESB - MEDIUM VOLTAGE - EXISTING OVERHEAD		ESB - MEDIUM VOLTAGE - PROPOSED OVERHEAD DIVERSION
	ESB - LOW VOLTAGE - EXISTING UNDERGROUND		ESB - LOW VOLTAGE - PROPOSED UNDERGROUND DIVERSION
	ESB - LOW VOLTAGE - EXISTING OVERHEAD		ESB - LOW VOLTAGE - PROPOSED OVERHEAD DIVERSION
	SITE BOUNDARY LINE		TEMPORARY LAND ACQUISITION
	EXISTING NETWORK TO BE DECOMMISSIONED		

NOTES:
1. UTILITY LOCATIONS ARE INDICATIVE ONLY AND BASED ON UTILITY PROVIDER RECORDS



Disclaimer
a. © National Transport Authority (NTA) 2022. This drawing is confidential and the copyright in it is owned by NTA. This drawing must not be either loaned, copied or otherwise reproduced in whole or in part or used for any purpose without the prior permission of NTA.
b. This drawing is to be used for the design element identified in the titleblock. Other information shown is to be considered indicative only. The drawing is to be read in conjunction with all other relevant design drawings.
c. O.S. data used for plans are printed under © Ordnance Survey Ireland Government of Ireland. All rights reserved. Licence Number 2022/OSI_NMA_180 National Transport Authority. All elevations are in metres and relate to OSi Geoid Model (OSGM15) Mean Head. All Co-ordinates are in Irish Transverse Mercator Grid (ITM) as defined by OSI active local GPS station.
d. Information concerning the position of apparatus shown on this drawing is based on drawings supplied by the utility owners and/or the utility works contractor, whilst every care has been taken as to the accuracy, completeness, sufficiency or otherwise of this information, NTA does not warrant or accept any liability or responsibility in relation to the adequacy, accuracy, reasonableness or completeness of the information provided as part of this document or any matter on which the information is based (including but not limited to loss or damage arising as a result of reliance by recipients on the information or any part of it). Any liabilities are hereby expressly disclaimed.
e. The information contained herein has been provided by the NTA but does not purport to be comprehensive or final. Recipients should not rely on the information. Neither the NTA nor any of its directors, officers, employees, agents, stakeholders or advisers make any representation or warranty as to, or accept any liability or responsibility in relation to, the adequacy, accuracy, reasonableness or completeness of the information provided as part of this document or any matter on which the information is based (including but not limited to loss or damage arising as a result of reliance by recipients on the information or any part of it). Any liabilities are hereby expressly disclaimed.

Project Ireland 2040
Building Ireland's Future

Rev	Date	Drn	Chk'd	App'd	Description
M01	FEB 2023	DS	EE	SMG	ISSUED FOR PHASE 4: PLANNING

Client: **NTA**
Udarás Náisiúnta Iompair
National Transport Authority

Engineering Designer: **CIROD**
TYPSA

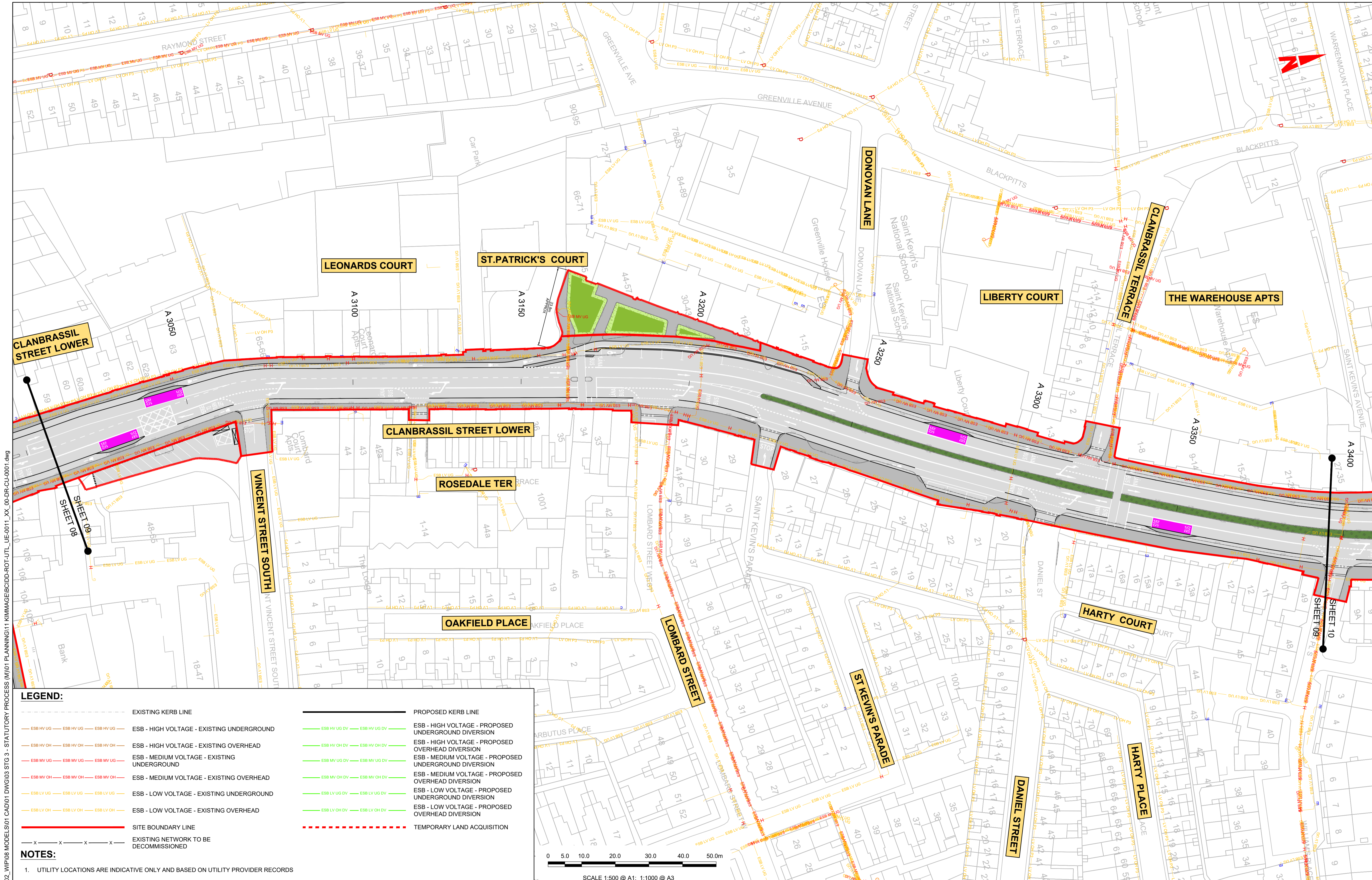
Date: FEB 2023
Scale: 1:500 @ A1
1:1000 @ A3

Programme Code: BCIDD
Originator Code: ROT

Drawn: DS
Checked: EE
Approved: SMG

Programme Title BUSCONNECTS DUBLIN CORE BUS CORRIDORS INFRASTRUCTURE WORKS	
Drawing Title KIMMAGE TO CITY CENTRE CORE BUS CORRIDOR SCHEME ESB ASSET ALTERATIONS	
Drawing File Name BCIDD-ROT-UTL_UE-0011_XX_00-DR-CU-0008	Sheet Number 08 of 14
Status A	Rev M01

DO NOT SCALE USE FIGURED DIMENSIONS ONLY

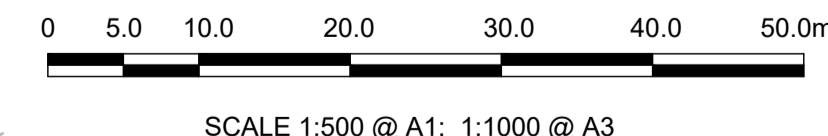


LEGEND:

	EXISTING KERB LINE		PROPOSED KERB LINE
	ESB - HIGH VOLTAGE - EXISTING UNDERGROUND		ESB - HIGH VOLTAGE - PROPOSED UNDERGROUND DIVERSION
	ESB - HIGH VOLTAGE - EXISTING OVERHEAD		ESB - HIGH VOLTAGE - PROPOSED OVERHEAD DIVERSION
	ESB - MEDIUM VOLTAGE - EXISTING UNDERGROUND		ESB - MEDIUM VOLTAGE - PROPOSED UNDERGROUND DIVERSION
	ESB - MEDIUM VOLTAGE - EXISTING OVERHEAD		ESB - MEDIUM VOLTAGE - PROPOSED OVERHEAD DIVERSION
	ESB - LOW VOLTAGE - EXISTING UNDERGROUND		ESB - LOW VOLTAGE - PROPOSED UNDERGROUND DIVERSION
	ESB - LOW VOLTAGE - EXISTING OVERHEAD		ESB - LOW VOLTAGE - PROPOSED OVERHEAD DIVERSION
	SITE BOUNDARY LINE		TEMPORARY LAND ACQUISITION
	EXISTING NETWORK TO BE DECOMMISSIONED		

NOTES:

- UTILITY LOCATIONS ARE INDICATIVE ONLY AND BASED ON UTILITY PROVIDER RECORDS



Disclaimer:

a. © National Transport Authority (NTA) 2022. This drawing is confidential and the copyright in it is owned by NTA. This drawing must not be either loaned, copied or otherwise reproduced in whole or in part or used for any purpose without the prior permission of NTA.

b. This drawing is to be used for the design element identified in the titleblock. Other information shown is to be considered indicative only. The drawing is to be read in conjunction with all other relevant design drawings.

c. O.S. data used for plans are printed under © Ordnance Survey Ireland Government of Ireland. All rights reserved. Licence Number 2022/OSI_NMA_180 National Transport Authority. All elevations are in metres and relate to OSI Geoid Model (OSGM15) Mean Head. All Co-ordinates are in Irish Transverse Mercator Grid (ITM) as defined by OSI active local GPS station.

d. Information concerning the position of apparatus shown on this drawing is based on drawings supplied by the utility owners and/or the utility works contractor, whilst every care has been taken in the preparation of this drawing, positions should be taken as approximate and are intended for general guidance only and no representation is made by the NTA as to the accuracy, completeness, sufficiency or otherwise of this drawing and the position of the apparatus. The information contained herein does not purport to be comprehensive or final as the apparatus is subject to being altered and/or superseded. Recipients should not rely on this information. Any liabilities are hereby expressly disclaimed.

e. The information contained herein has been provided by the NTA but does not purport to be comprehensive or final. Recipients should not rely on the information. Neither the NTA nor any of its directors, officers, employees, agents, stakeholders or advisers make any representation or warranty as to, or accept any liability or responsibility in relation to, the adequacy, accuracy, reasonableness or completeness of the information provided as part of this document or any matter on which the information is based (including but not limited to loss or damage arising as a result of reliance by recipients on the information or any part of it). Any liabilities are hereby expressly disclaimed.



Rev	Date	Drn	Chk'd	App'd	Description
M01	FEB 2023	DS	EE	SMG	ISSUED FOR PHASE 4: PLANNING

Client: **NTA**
Údaráis Náisiúnta Iompair
National Transport Authority

Engineering Designer: **PROD**
TYPSA

Date: FEB 2023
Scale: 1:500 @ A1
1:1000 @ A3

Programme Code: BCIDD
Originator Code: ROT

Drawn: DS
Checked: EE
Approved: SMG

Programme Title: BUSCONNECTS DUBLIN	
CORE BUS CORRIDORS INFRASTRUCTURE WORKS	
Drawing Title: KIMMAGE TO CITY CENTRE CORE BUS CORRIDOR SCHEME ESB ASSET ALTERATIONS	
Drawing File Name: BCIDD-ROT-UTL_UE-0011_XX_00-DR-CU-0009	Sheet Number: 09 of 14
Status: A	Rev: M01

DO NOT SCALE USE FIGURED DIMENSIONS ONLY

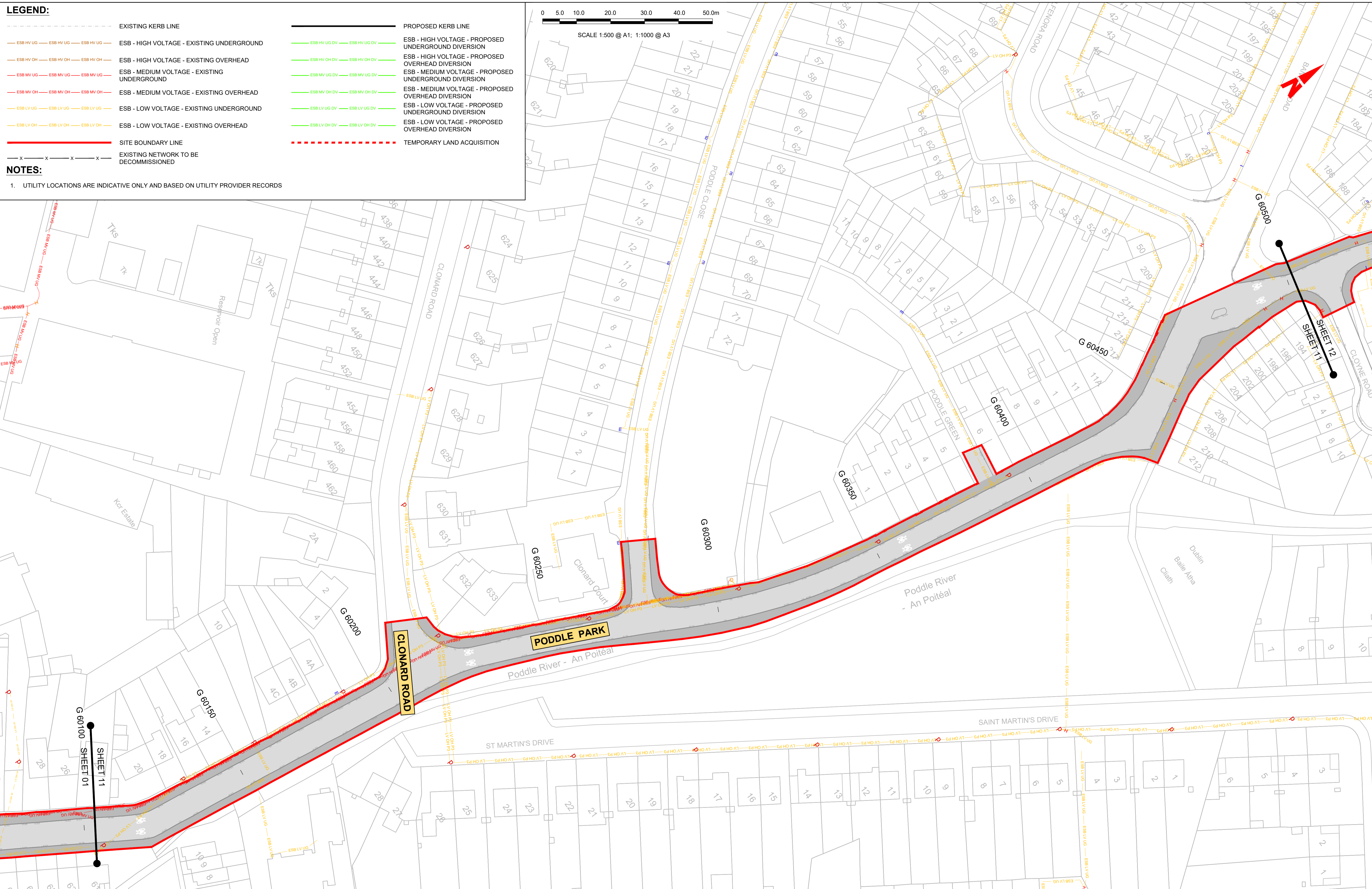
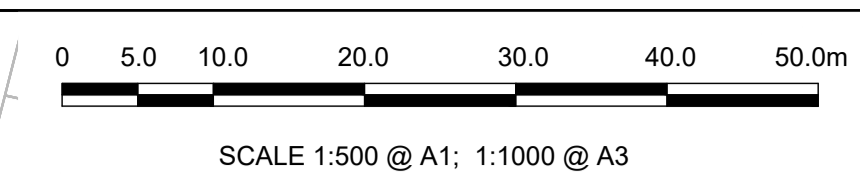
\\produbp1u20191917117-02_WIP08 MODELS01 CAD01 PLANNING11 KIMMAGEBCIDD-ROT-UTL_UE-0011_XX_00-DR-CU-0001.dwg

LEGEND:

	EXISTING KERB LINE		PROPOSED KERB LINE
	ESB HV UG		ESB HV UG DV
	ESB MV UG		ESB MV UG DV
	ESB LV UG		ESB LV UG DV
	ESB HV OH		ESB HV OH DV
	ESB MV OH		ESB MV OH DV
	ESB LV OH		ESB LV OH DV
	SITE BOUNDARY LINE		TEMPORARY LAND ACQUISITION
	EXISTING NETWORK TO BE DECOMMISSIONED		

NOTES:

- UTILITY LOCATIONS ARE INDICATIVE ONLY AND BASED ON UTILITY PROVIDER RECORDS



Disclaimer

a. © National Transport Authority (NTA) 2022. This drawing is confidential and the copyright in it is owned by NTA. This drawing must not be either loaned, copied or otherwise reproduced in whole or in part or used for any purpose without the prior permission of NTA.

b. This drawing is to be used for the design element identified in the titleblock. Other information shown is to be considered indicative only. The drawing is to be read in conjunction with all other relevant design drawings.

c. O.S. data used for plans are printed under © Ordnance Survey Ireland Government of Ireland. All rights reserved. Licence Number 2022/OSI_NMA_180 National Transport Authority. All elevations are in metres and relate to OSI Grid Model (OSGM15) Mean Head. All Co-ordinates are in Irish Transverse Mercator Grid (ITM) as defined by OSI active local GPS station.

d. Information concerning the position of apparatus shown on this drawing is based on drawings supplied by the utility owners and/or the utility works contractor, whilst every care has been taken in the preparation of this drawing, positions should be taken as approximate and are intended for general guidance only and no representation is made by the NTA as to the accuracy, completeness, sufficiency or otherwise of this drawing and the position of the apparatus. The information contained herein does not purport to be comprehensive or final as the apparatus is subject to being altered and/or superceded. Recipients should not rely on this information. Any liabilities are hereby expressly disclaimed.

e. The information contained herein has been provided by the NTA but does not purport to be comprehensive or final. Recipients should not rely on the information. Neither the NTA nor any of its directors, officers, employees, agents, stakeholders or advisers make any representation or warranty as to, or accept any liability or responsibility in relation to, the adequacy, accuracy, reasonableness or completeness of the information provided as part of this document or any matter on which the information is based (including but not limited to loss or damage arising as a result of reliance by recipients on the information or any part of it). Any liabilities are hereby expressly disclaimed.



Rev	Date	Drn	Chk'd	App'd	Description
M01	FEB 2023	DS	EE	SMG	ISSUED FOR PHASE 4: PLANNING

Client

Údarás Náisiúnta Iompair
National Transport Authority

Engineering Designer

Drawn DS
Checked EE
Approved SMG

Programme Title
**BUSCONNECTS DUBLIN
CORE BUS CORRIDORS INFRASTRUCTURE WORKS**

Drawing Title
KIMMAGE TO CITY CENTRE CORE BUS CORRIDOR SCHEME
ESB ASSET ALTERATIONS

Drawing File Name
BCIDD-ROT-UTL_UE-0011_XX_00-DR-CU-0011

Sheet Number
11 of 14

Status
A

Rev
M01

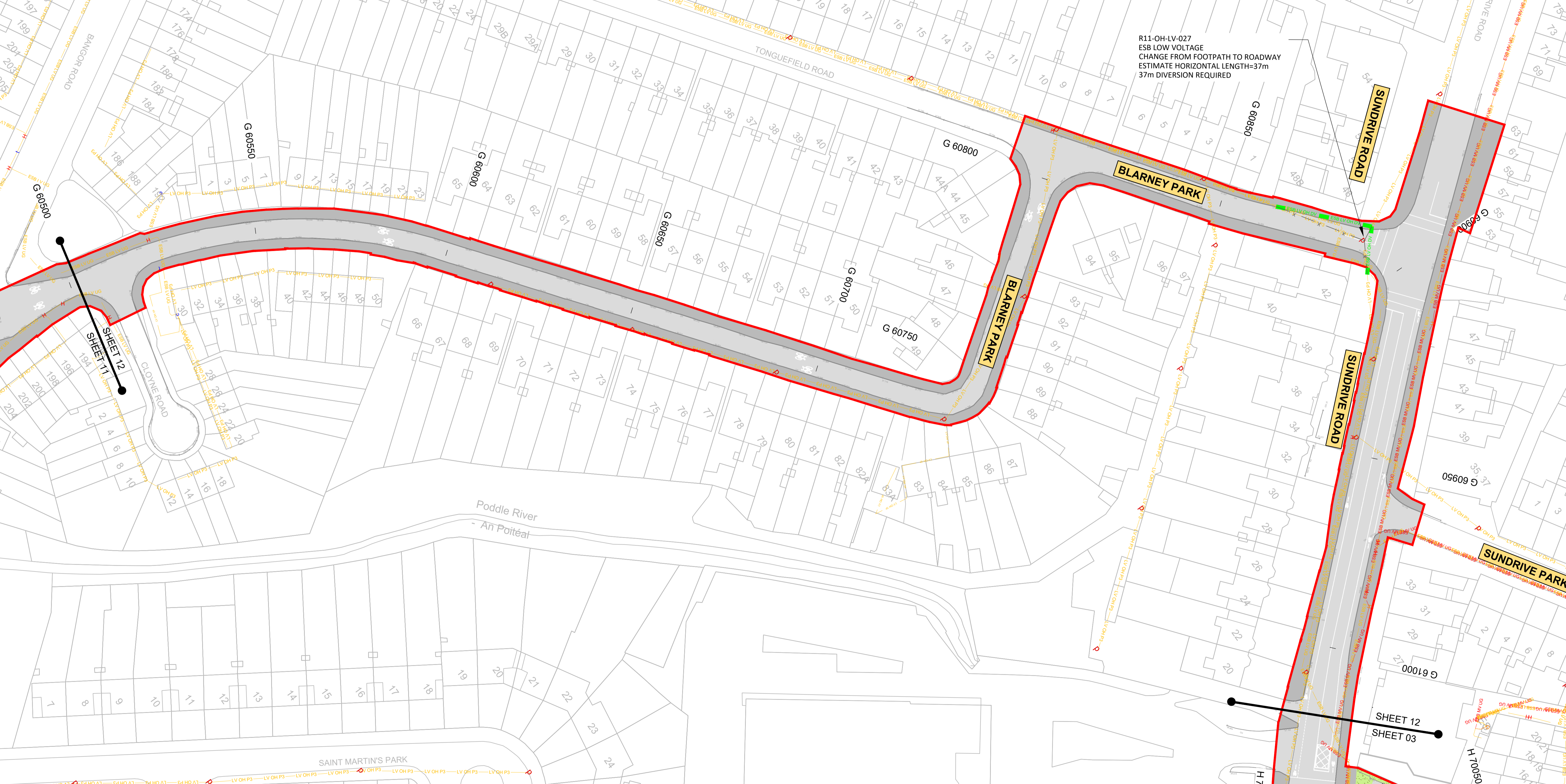
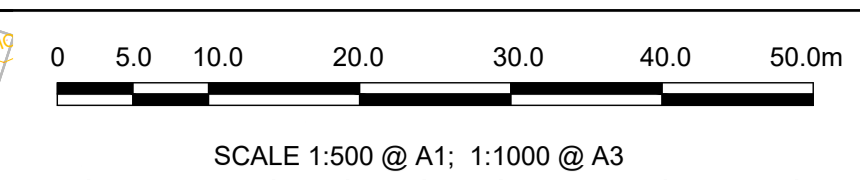
DO NOT SCALE USE FIGURED DIMENSIONS ONLY

\\wddubp1u2019171719117-02_WIP08 MODELS01 CAD01 DWG03 STG 3 - STATUTORY PROCESS (M)01 PLANNING11 KIMMAGEBCIDD-ROT-UTL_UE-0011_XX_00-DR-CU-0001.dwg

LEGEND:	
	EXISTING KERB LINE
	PROPOSED KERB LINE
	ESB - HIGH VOLTAGE - EXISTING UNDERGROUND
	ESB - HIGH VOLTAGE - PROPOSED UNDERGROUND DIVERSION
	ESB - HIGH VOLTAGE - EXISTING OVERHEAD
	ESB - HIGH VOLTAGE - PROPOSED OVERHEAD DIVERSION
	ESB - MEDIUM VOLTAGE - EXISTING UNDERGROUND
	ESB - MEDIUM VOLTAGE - PROPOSED UNDERGROUND DIVERSION
	ESB - MEDIUM VOLTAGE - EXISTING OVERHEAD
	ESB - MEDIUM VOLTAGE - PROPOSED OVERHEAD DIVERSION
	ESB - LOW VOLTAGE - EXISTING UNDERGROUND
	ESB - LOW VOLTAGE - PROPOSED UNDERGROUND DIVERSION
	ESB - LOW VOLTAGE - EXISTING OVERHEAD
	ESB - LOW VOLTAGE - PROPOSED OVERHEAD DIVERSION
	SITE BOUNDARY LINE
	TEMPORARY LAND ACQUISITION
	EXISTING NETWORK TO BE DECOMMISSIONED

NOTES:

- UTILITY LOCATIONS ARE INDICATIVE ONLY AND BASED ON UTILITY PROVIDER RECORDS



Disclaimer

a. © National Transport Authority (NTA) 2022. This drawing is confidential and the copyright in it is owned by NTA. This drawing must not be either loaned, copied or otherwise reproduced in whole or in part or used for any purpose without the prior permission of NTA.

b. This drawing is to be used for the design element identified in the titleblock. Other information shown is to be considered indicative only. The drawing is to be read in conjunction with all other relevant design drawings.

c. O.S. data used for plans are printed under © Ordnance Survey Ireland Government of Ireland. All rights reserved. Licence Number 2022/OSI_NMA_180 National Transport Authority. All elevations are in metres and relate to OSI Geoid Model (OSGM15) Mean Head. All Co-ordinates are in Irish Transverse Mercator Grid (ITM) as defined by OSI active local GPS station.

d. Information concerning the position of apparatus shown on this drawing is based on drawings supplied by the utility owners and/or the utility works contractor, whilst every care has been taken in the preparation of this drawing, positions should be taken as approximate and are intended for general guidance only and no representation is made by the NTA as to the accuracy, completeness, sufficiency or otherwise of this drawing and the position of the apparatus. The information contained herein does not purport to be comprehensive or final as the apparatus is subject to being altered and/or superceded. Recipients should not rely on this information. Any liabilities are hereby expressly disclaimed.

e. The information contained herein has been provided by the NTA but does not purport to be comprehensive or final. Recipients should not rely on the information. Neither the NTA nor any of its directors, officers, employees, agents, stakeholders or advisers make any representation or warranty as to, or accept any liability or responsibility in relation to, the adequacy, accuracy, reasonableness or completeness of the information provided as part of this document or any matter on which the information is based (including but not limited to loss or damage arising as a result of reliance by recipients on the information or any part of it). Any liabilities are hereby expressly disclaimed.



Rev	Date	Drn	Chk'd	App'd	Description
M01	FEB 2023	DS	EE	SMG	ISSUED FOR PHASE 4: PLANNING

Client NTA Udarás Náisiúnta Iompair National Transport Authority		Engineering Designer CIROD TYPSA		
Date FEB 2023	Scale 1:500 @ A1 1:1000 @ A3	Drawn DS	Checked EE	Approved SMG
Programme Code BCIDD	Originator Code ROT	QMS Code		

Programme Title BUSCONNECTS DUBLIN CORE BUS CORRIDORS INFRASTRUCTURE WORKS				
Drawing Title KIMMAGE TO CITY CENTRE CORE BUS CORRIDOR SCHEME ESB ASSET ALTERATIONS				
Drawing File Name BCIDD-ROT-UTL_UE-0011_XX_00-DR-CU-0012	Sheet Number 12 of 14	Status A	Rev M01	

DO NOT SCALE USE FIGURED DIMENSIONS ONLY

\\produbp1\U201917\17117-02_WIPO08 MODELS\01_CAD\01_PLANNING\11_KIMMAGE\BCIDD-ROT-UTL_UE-0011_XX_00-DR-CU-0001.dwg



LEGEND:

	EXISTING KERB LINE		PROPOSED KERB LINE
	ESB - HIGH VOLTAGE - EXISTING UNDERGROUND		ESB - HIGH VOLTAGE - PROPOSED UNDERGROUND DIVERSION
	ESB - HIGH VOLTAGE - EXISTING OVERHEAD		ESB - HIGH VOLTAGE - PROPOSED OVERHEAD DIVERSION
	ESB - MEDIUM VOLTAGE - EXISTING UNDERGROUND		ESB - MEDIUM VOLTAGE - PROPOSED UNDERGROUND DIVERSION
	ESB - MEDIUM VOLTAGE - EXISTING OVERHEAD		ESB - MEDIUM VOLTAGE - PROPOSED OVERHEAD DIVERSION
	ESB - LOW VOLTAGE - EXISTING UNDERGROUND		ESB - LOW VOLTAGE - PROPOSED UNDERGROUND DIVERSION
	ESB - LOW VOLTAGE - EXISTING OVERHEAD		ESB - LOW VOLTAGE - PROPOSED OVERHEAD DIVERSION
	SITE BOUNDARY LINE		TEMPORARY LAND ACQUISITION
	EXISTING NETWORK TO BE DECOMMISSIONED		

NOTES:

- UTILITY LOCATIONS ARE INDICATIVE ONLY AND BASED ON UTILITY PROVIDER RECORDS



SCALE 1:500 @ A1; 1:1000 @ A3

Disclaimer
 a. © National Transport Authority (NTA) 2022. This drawing is confidential and the copyright in it is owned by NTA. This drawing must not be either loaned, copied or otherwise reproduced in whole or in part or used for any purpose without the prior permission of NTA.
 b. This drawing is to be used for the design element identified in the titleblock. Other information shown is to be considered indicative only. The drawing is to be read in conjunction with all other relevant design drawings.
 c. O.S. data used for plans are printed under © Ordnance Survey Ireland Government of Ireland. All rights reserved. Licence Number 2022/OSI_NMA_180 National Transport Authority. All elevations are in metres and relate to OSI Geoid Model (OSGM15) Mean Head. All Co-ordinates are in Irish Transverse Mercator Grid (ITM) as defined by OSI active local GPS station.

d. Information concerning the position of apparatus shown on this drawing is based on drawings supplied by the utility owners and/or the utility works contractor, whilst every care has been taken as to, or accept any liability or responsibility in relation to, the adequacy, accuracy, reasonableness or completeness of the information provided as part of this document or any matter on which the information is based (including but not limited to loss or damage arising as a result of reliance by recipients on the information or any part of it). Any liabilities are hereby expressly disclaimed.

e. The information contained herein has been provided by the NTA but does not purport to be comprehensive or final. Recipients should not rely on the information. Neither the NTA nor any of its directors, officers, employees, agents, stakeholders or advisers make any representation or warranty as to, or accept any liability or responsibility in relation to, the adequacy, accuracy, reasonableness or completeness of the information provided as part of this document or any matter on which the information is based (including but not limited to loss or damage arising as a result of reliance by recipients on the information or any part of it). Any liabilities are hereby expressly disclaimed.



Rev	Date	Drm	Chk'd	App'd	Description
M01	FEB 2023	DS	EE	SMG	ISSUED FOR PHASE 4: PLANNING

Client
NTA
 Údarás Náisiúnta Iompair
 National Transport Authority

Engineering Designer
CIROD
 TYPSA

Programme Title
BUSCONNECTS DUBLIN
CORE BUS CORRIDORS INFRASTRUCTURE WORKS

Drawing Title
 KIMMAGE TO CITY CENTRE CORE BUS CORRIDOR SCHEME
 ESB ASSET ALTERATIONS

Date
 FEB 2023

Scale
 1:500 @ A1
 1:1000 @ A3

Drawn
 DS

Checked
 EE

Approved
 SMG

Drawing File Name
 BCIDD-ROT-UTL_UE-0011_XX_00-DR-CU-0013

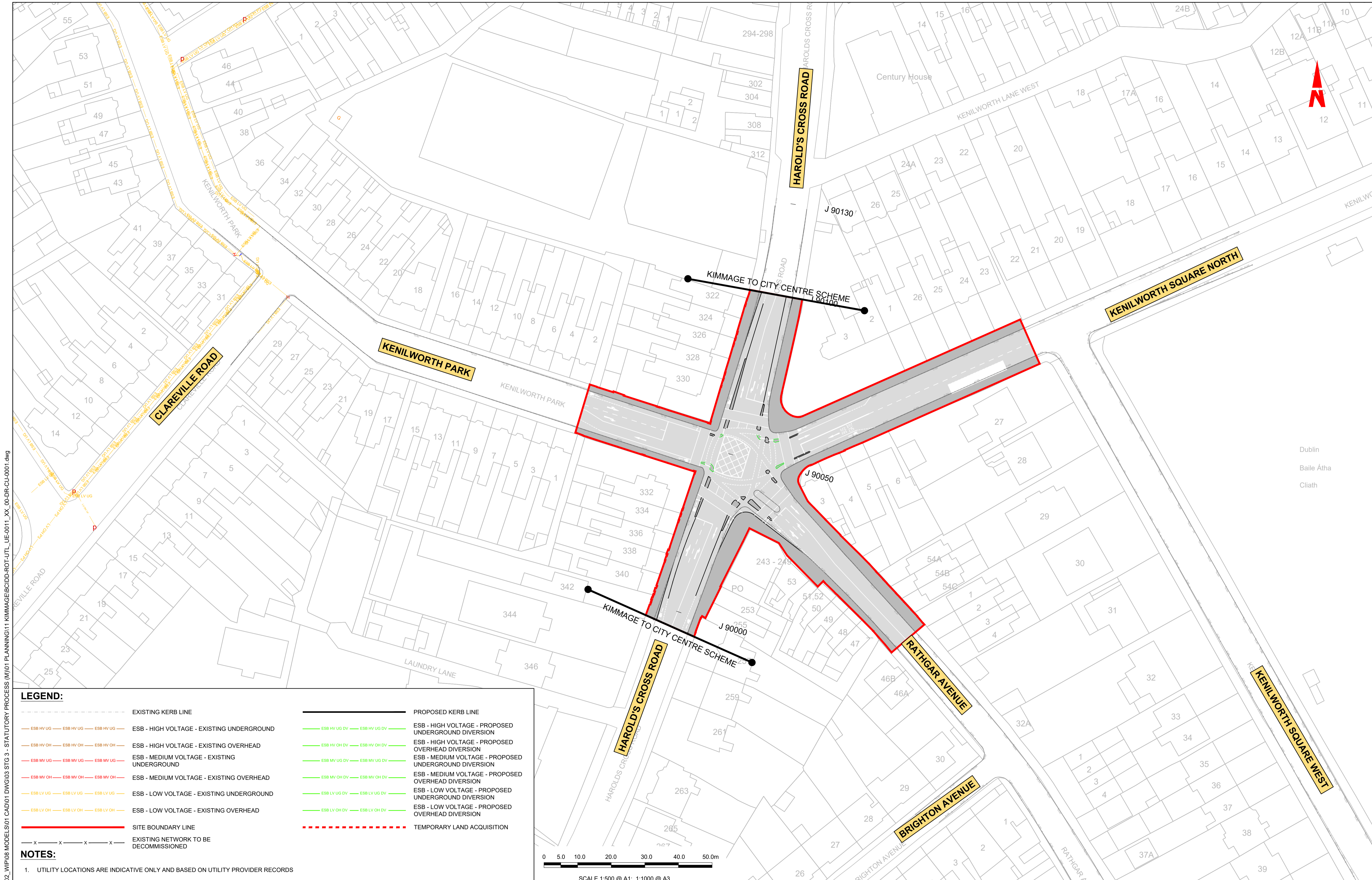
Sheet Number
 13 of 14

Status
 A

Rev
 M01

DO NOT SCALE USE FIGURED DIMENSIONS ONLY

\\nodubp1\U201919\17117-02_WIP\08 MODELS\01 CAD\01 DWG\03 STG 3 - STATUTORY PROCESS (M)\01 PLANNING\11 KIMMAGE\BCIDD-ROT-UTL_UE-0011_XX_00-DR-CU-0001.dwg



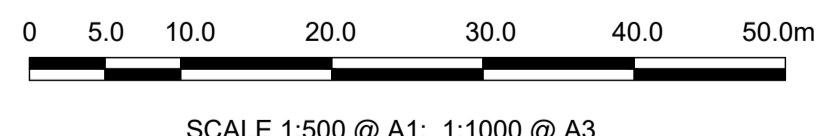
W:\000000\11\17117-02_WIP08 MODELS\01 CAD\01 DWG\03 STG 3 - STATUTORY PROCESS (M)\01 PLANNING\11 KIMMAGE\BCIDD-ROT-UTL_UE-0011_XX_00-DR-CU-0001.dwg

LEGEND:

	EXISTING KERB LINE		PROPOSED KERB LINE
	ESB - HIGH VOLTAGE - EXISTING UNDERGROUND		ESB - HIGH VOLTAGE - PROPOSED UNDERGROUND DIVERSION
	ESB - HIGH VOLTAGE - EXISTING OVERHEAD		ESB - HIGH VOLTAGE - PROPOSED OVERHEAD DIVERSION
	ESB - MEDIUM VOLTAGE - EXISTING UNDERGROUND		ESB - MEDIUM VOLTAGE - PROPOSED UNDERGROUND DIVERSION
	ESB - MEDIUM VOLTAGE - EXISTING OVERHEAD		ESB - MEDIUM VOLTAGE - PROPOSED OVERHEAD DIVERSION
	ESB - LOW VOLTAGE - EXISTING UNDERGROUND		ESB - LOW VOLTAGE - PROPOSED UNDERGROUND DIVERSION
	ESB - LOW VOLTAGE - EXISTING OVERHEAD		ESB - LOW VOLTAGE - PROPOSED OVERHEAD DIVERSION
	SITE BOUNDARY LINE		TEMPORARY LAND ACQUISITION
	EXISTING NETWORK TO BE DECOMMISSIONED		

NOTES:

1. UTILITY LOCATIONS ARE INDICATIVE ONLY AND BASED ON UTILITY PROVIDER RECORDS



Disclaimer

a. © National Transport Authority (NTA) 2022. This drawing is confidential and the copyright in it is owned by NTA. This drawing must not be either loaned, copied or otherwise reproduced in whole or in part or used for any purpose without the prior permission of NTA.

b. This drawing is to be used for the design element identified in the titleblock. Other information shown is to be considered indicative only. The drawing is to be read in conjunction with all other relevant design drawings.

c. O.S. data used for plans are printed under © Ordnance Survey Ireland Government of Ireland. All rights reserved. Licence Number 2022/OSI_NMA_180 National Transport Authority. All elevations are in metres and relate to OSI Geoid Model (OSGM15) Mean Head. All Co-ordinates are in Irish Transverse Mercator Grid (ITM) as defined by OSI active local GPS station.

d. Information concerning the position of apparatus shown on this drawing is based on drawings supplied by the utility owners and/or the utility works contractor, whilst every care has been taken in the preparation of this drawing, positions should be taken as approximate and are intended for general guidance only and no representation is made by the NTA as to the accuracy, completeness, sufficiency or otherwise of this drawing and the position of the apparatus. The information contained herein does not purport to be comprehensive or final as the apparatus is subject to being altered and/or superceded. Recipients should not rely on this information. Any liabilities are hereby expressly disclaimed.

e. The information contained herein has been provided by the NTA but does not purport to be comprehensive or final. Recipients should not rely on the information. Neither the NTA nor any of its directors, officers, employees, agents, stakeholders or advisers make any representation or warranty as to, or accept any liability or responsibility in relation to, the adequacy, accuracy, reasonableness or completeness of the information provided as part of this document or any matter on which the information is based (including but not limited to loss or damage arising as a result of reliance by recipients on the information or any part of it). Any liabilities are hereby expressly disclaimed.



Rev	Date	Drn	Chk'd	App'd	Description
M01	FEB 2023	DS	EE	SMG	ISSUED FOR PHASE 4: PLANNING

Client NTA Udarás Náisiúnta Iompair National Transport Authority		Engineering Designer CIROD TYPSA		
Date FEB 2023	Scale 1:500 @ A1 1:1000 @ A3	Drawn DS	Checked EE	Approved SMG
Programme Code BCIDD	Originator Code ROT	QMS Code		

Programme Title BUSCONNECTS DUBLIN CORE BUS CORRIDORS INFRASTRUCTURE WORKS				
Drawing Title KIMMAGE TO CITY CENTRE CORE BUS CORRIDOR SCHEME ESB ASSET ALTERATIONS				
Drawing File Name BCIDD-ROT-UTL_UE-0011_XX_00-DR-CU-0014	Sheet Number 14 of 14	Status A	Rev M01	

DO NOT SCALE USE FIGURED DIMENSIONS ONLY